

MOLD REMEDIATION

LEAD ABATEMENT

ASBESTOS ABATEMENT

DISASTER RESTORATION

MOBILE CONTAINMENT



About Fiberlock

For over 35 years, Fiberlock Technologies has been the leading manufacturer of products used to address environmental, safety and health hazards. Founded on the core beliefs that superior quality, definitive science and enduring service are the keys to corporate success, Fiberlock has grown to become one of the most respected names in the abatement and remediation industry.

From asbestos, lead or mold to disaster restoration and dust control Fiberlock has the expertise, insight and product to help you get the job done quickly, effectively and economically. Whatever requirements you may have turn to the leader. Turn to Fiberlock.

Who Is ICP Construction?

In 2016 Fiberlock Technologies became a part of ICP Construction, an innovative manufacturer of quality paints, coatings, and remediation solutions for the architectural and building industries. Innovative Chemical Products (ICP) Group has three divisions, one of which is the Construction division, and Fiberlock Technologies is a preeminent brand within the ICP Construction family.



**Architectural coatings,
sports surfaces coatings,
and niche building
products**



**Low pressure foam
adhesives and sealants
for roofing, construction,
insulation, and other
applications**



**Line-applied clear
coatings for packaging,
print, and other specialty
applications**

Table of Contents

MOLD PRODUCTS

Cleaners and Stain Removers	5-6,8
Advanced Peroxide Cleaner	
HydroBoost & HydroBrite	
IAQ 1000	
Instant Mold Stain Remover	
Disinfectants and Sanitizers	3-4,7-8
ShockWave & ShockWave RTU	
ShockWave Hydrogen Peroxide	
IAQ 2000 & IAQ 2500	
Fungicidal Coatings	9
AfterShock	
Mold Resistant Coatings	10-11
IAQ 6000 Series	
IAQ 6000 GEN3	
IAQ 6000HD	
IAQ 6040	
Primers & Sealers	12
IAQ 3000	
IAQ 4000	
IAQ 5000	
HVAC Coatings	13-14
IAQ 7000 Series	
IAQ 8000 Series	
Mold Resistant Waterproofers	15
IAQ 9000	

LEAD ABATEMENT

Encapsulants	17-20
LBC	
ChildGuard	
Cleaners & Wipes	21
LeadSafe Dust Cleaner	
LeadSafe Dust Wipes	
Lockdowns	22
Lead Shield	

PAINT REMOVERS

Paint Removers	23-29
NexStrip	
NexStrip Pro	
NexStrip 8	
Piranha 2	
Piranha 4	
Piranha 8	
Accessories	30
Piranha Paper	
Piranha Neutralizer	

ASBESTOS ABATEMENT

Encapsulants	31-34
ABC	
ABC Fiberspray	
TBC	
Wetting Agents	35
Penewet	
Lockdowns	36
Fiberset PM	
Thermal Insulation Repair	37-39
Lag Kote	
Lag Kote II	
Lag Kloth	
Decontamination Shower	40

SERPI ABATEMENT

Asbestos Abatement	41-43
Serpiflex	
Serpimastic	
Wet Wrap 'N' Seal	
Lead Abatement	44
Barrier Coat II	

INDUSTRIAL COATINGS

Primers, Sealers & Rust Inhibitors	45-48
Power Block	
Powerstone Plus	
Power Rust Stop	
Grip-Tack	

DISASTER RESTORATION

Restoration Coatings	49-52
Smoke Odor Sealer	
ULTRA Smoke Odor Sealer	
Odor Counteractants	53
Extreme Duty Odor Counteractant	
Cleaners	54
Citrus Solvent Cleaner	
Heavy Duty Cleaner	
Extreme Duty Cleaner	

MOBILE CONTAINMENT

Containment Units	55-60
Kontrol Kube HardPanel Unit	
Kontrol Kube Advanced Unit	
Kontrol Kube TopSider Unit	
Accessories	61-62
Negative Air Machine & Filters	
AirBase	

PRODUCT REFERENCE GUIDES

Reference Guides	63-70
Capabilities	
Manufacturing Facility	71
Distribution	72

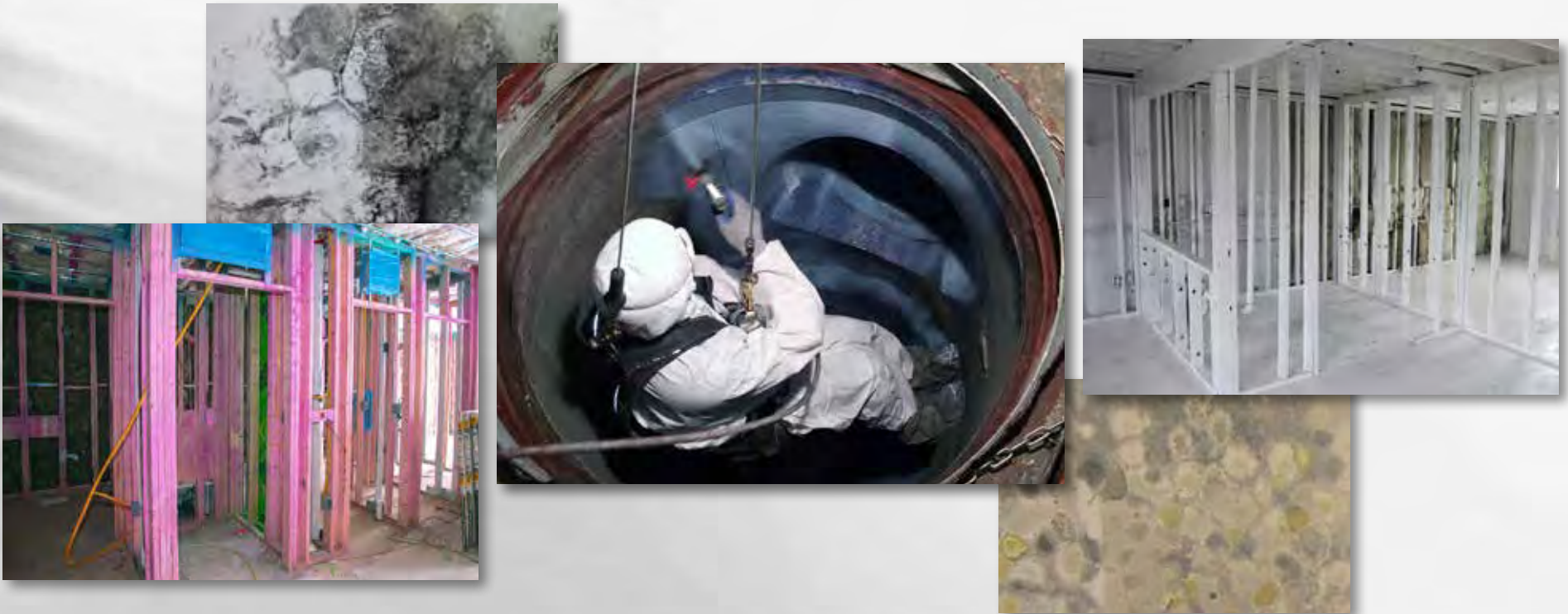
Mold Products

For more than a decade, Fiberlock IAQ products have provided restoration professionals with proven results and the broadest array of cleaning, disinfecting and coating solutions available.

Fiberlock's IAQ line offers:

- EPA registered Disinfectants & Sanitizers
- EPA registered Fungicidal Coatings
- Mold Resistant Coatings*
- Advanced Surface Cleaners & Stain Removers
- HVAC Repair Coatings/Resurfacing Materials
- Mold Resistant Waterproofers*
- Stain Blocking & Corrosion Inhibiting Primers

With thirty years of formulation expertise in the manufacture of environmental bioscience products and extensive independent laboratory testing, Fiberlock delivers confidence and performance in every Fiberlock IAQ product that we produce.



*Resists mold growth on the dry coating surface only



ShockWave

EPA registered disinfectant, sanitizer and cleaner



ShockWave Concentrate is Fiberlock's signature EPA registered antimicrobial disinfectant, sanitizer and cleaner. For over a decade, remediation professionals have made ShockWave the industry's leading product for a host of restoration challenges including mold remediation, water & fire damage restoration, crime scene/ bio-recovery, and catastrophe preparedness and response. Whether employed in residential mold mitigation, or deployed by contractors and organizations after hurricanes and floods, ShockWave is recognized as the dominant disinfectant/sanitizer within the restoration and remediation industries.

ShockWave is a powerful concentrated quaternary ammonium chloride blend that yields up to 64 gallons of usable product from every gallon of concentrate. ShockWave has over 130 organism kill claims including *Aspergillus niger*, *Penicillium spinulosum*, *Cryptococcus neoformans*, *E. coli*, MRSA, Norovirus, Salmonella, HIV, Hepatitis-B, Herpes, Poliovirus, and many other pathogenic and environmental microbial organisms.

- Economical concentrated formula
- Effective in 98% soil load
- Over 130 organism kill claims
- Remains effective in up to 791 ppm hard water
- EPA registered as a sanitizer for water damage restoration against odor causing bacteria and fungi
- EPA registered for use on porous and non-porous material

ShockWave RTU

The most versatile ready-to-use disinfectant available

When time is critical and your reputation is on the line you need the right tools to handle the situation quickly, easily and effectively. ShockWave RTU is the only tool you will need for water damage restoration, sewage cleanup, mold remediation, disinfection, porous surface sanitization, and deodorizing.

ShockWave RTU is designed to handle any situation a remediation professional might encounter. ShockWave RTU has been formulated, tested, and is registered by the EPA for use on more surfaces, in more situations, and to kill more organisms than any other ready-to-use product available in the restoration and remediation industry.

- Convenient ready-to-use formula
- Helps eliminate the potential for mixing errors
- Ideal for situations when clean water is not available
- EPA registered as a sanitizer for water damage restoration against odor causing bacteria and fungi
- EPA registered for use on porous and non-porous material



ShockWave RTU being applied to wood framing



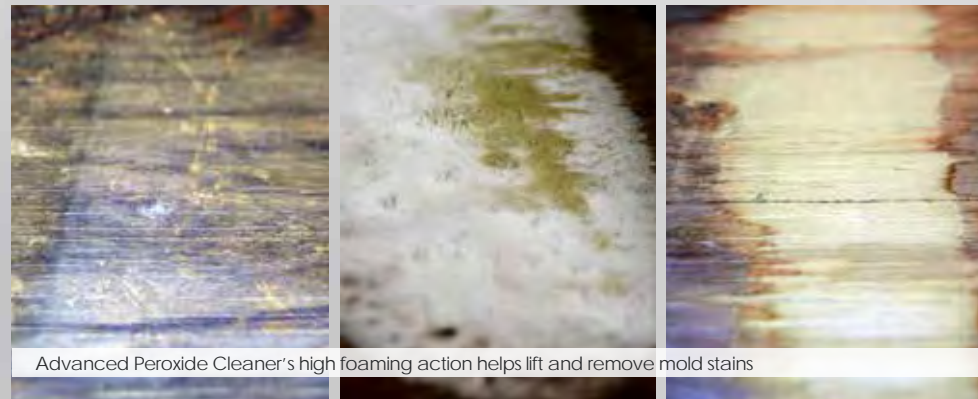
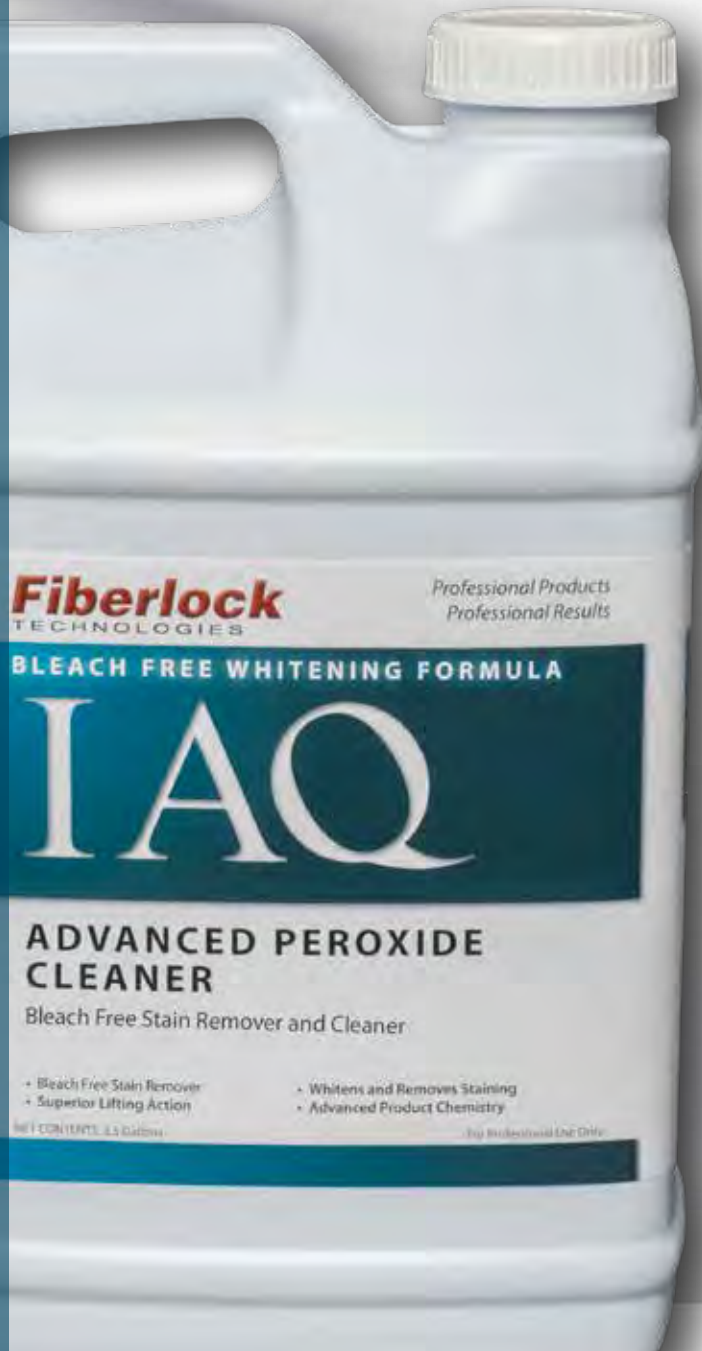
Advanced Peroxide Cleaner

A revolutionary mold stain cleaner for the restoration professional[†]

The leader in advanced cleaners and coatings, Fiberlock Technologies has introduced a revolutionary new hydrogen peroxide based cleaner. Advanced Peroxide Cleaner is created using innovative chemistry and a unique manufacturing process.

The proprietary formulation releases the maximum oxidation potential of Fiberlock's Advanced Peroxide Cleaner. This allows for a lower concentration product that is not DOT regulated. The end result is a product that provides performance unmatched by any other peroxide based cleaners.

- Dye and perfume free
- Deep penetrating stain lifting action
- Provides maximum labor savings
- Not DOT regulated



Advanced Peroxide Cleaner's high foaming action helps lift and remove mold stains

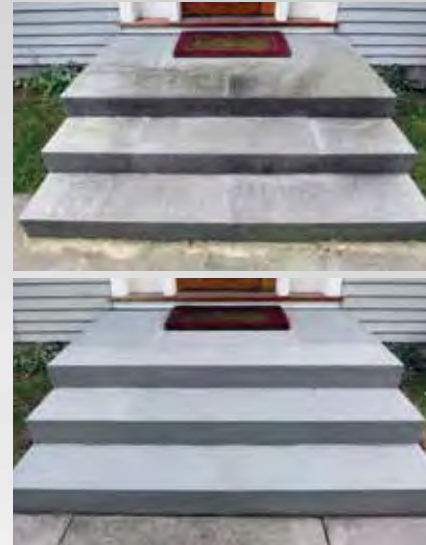
[†]For the cleaning and removal of mold stains, dirt and inanimate particulate. No claim is made by this product to prevent, destroy, repel or mitigate any living organism.

Additives for APC

HydroBoost: Booster

HydroBoost is an additive specifically designed to magnify the cleaning and stain removing power of Advanced Peroxide Cleaner (APC). Ideal for situations that demand extreme cleaning and powerful stain removal, HydroBoost works by instantly increasing the oxidation potential of Advanced Peroxide Cleaner[‡].

- Extra cleaning power
- Extra stain lifting power
- Extra stain removing power
- Extra labor savings



Before and after: APC with HydroBoost used to clean bluestone.



HydroBrite: Brightener

HydroBrite is a powder based additive for Fiberlock's IAQ Advanced Peroxide Cleaner (APC). HydroBrite is the first adjustable stain remover designed to remove stains from mold and mildew to help restore a substrate to its original look[‡].

- Adjustable stain removing power
- Attacks the toughest stains
- Ideal for OSB, plywood, wood framing & concrete



Before and after: APC with HydroBrite used to clean mold stained plywood.

[‡]For the cleaning and removal of mold stains, dirt and inanimate particulate. No claim is made by these products to prevent, destroy, repel or mitigate any living organism.

ShockWave Hydrogen Peroxide Disinfectant & Cleaner

Category IV Disinfectant - For situations that call for a delicate solution

ShockWave Hydrogen Peroxide Disinfectant & Cleaner is a broad spectrum category IV disinfectant and cleaner. ShockWave Hydrogen Peroxide Disinfectant & Cleaner is ideal for use in all restoration and remediation applications: mold remediation, water damage restoration and biohazard decontamination.

ShockWave Hydrogen Peroxide Disinfectant & Cleaner is a one-step hospital-use germicidal disinfectant cleaner and odor neutralizer designed for general cleaning and disinfecting of hard, non-porous environmental surfaces. It cleans quickly by removing dirt, grime, mold, mildew, and other common soils found in hospitals, nursing homes, schools and colleges, medical, dental offices, and life science laboratories.



- Category IV (Lowest EPA toxicity category)
- Cleaner, disinfectant, and broad spectrum sanitizer
- Tuberculocidal
- No PPE required
- Fragrance and dye free



ShockWave Hydrogen Peroxide is available in Canada*

*See Canadian label for complete instructions

MOLD STAIN REMOVERS

IAQ 1000 | A ready-to-use hydrogen peroxide based mold stain remover. IAQ 1000 is pH-neutral, and contains an agent that will whiten and brighten stained surfaces, but does not contain sodium hypochlorite (bleach). IAQ 1000 is suitable for use on water damage restoration projects to remove stains from mold and mildew*.

Instant Mold Stain Remover | An aggressive stain remover designed to clean stains from mold and mildew within minutes of application. The proprietary formulation instantly targets deeply embedded mold stains, which saves the applicator time and labor. Works on wood and concrete substrates. Ideally suited to mold stained attic sheathing and basement areas.



DISINFECTANTS

IAQ 2000 | An EPA registered concentrated disinfectant and cleaner designed to kill fungal, bacterial, and virucidal growth. When used as directed, IAQ 2000 disinfects hard, nonporous, inanimate, environmental surfaces, including floors and walls, that are prone to problems caused by microorganisms.

IAQ 2500 | A ready-to-use, EPA registered, non-acid cleaner and disinfectant for use in homes, schools, office buildings, and retail businesses. Efficacy tests have demonstrated that Fiberlock IAQ 2500 is an effective bactericide, fungicide, tuberculocide and virucide, in the presence of organic soil (5% blood serum).



*For the cleaning and removal of mold stains, dirt and inanimate particulate. No claim is made by this product to prevent, destroy, repel or mitigate any living organism.

AfterShock

The first coating to kill and prevent mold

AfterShock is a white, EPA registered, antimicrobial coating designed to kill residual mold and mildew remaining after pre-cleaning/disinfecting contaminated surfaces. AfterShock also inhibits the future growth and spread of mold and mildew on the cured film surface in residential and institutional buildings. This extremely durable, easy to apply, 100% acrylic sealant offers the ultimate combination of durability, application ease and fungal-resistance to address mold growth in nearly any situation.

AfterShock is recommended for use on interior wall surfaces such as plaster, wallboard, drywall, concrete, masonry block, wood, primed metal and galvanized metal. AfterShock is also recommended for use on interior wood framing, primed metal, concrete, and wallboard inside wall cavities. Not for use in HVAC system applications.

- EPA registered fungicidal coating
- Kills and prevents mold and mildew



AfterShock applied to wood studs.

IAQ 6000 Series

White, Clear & Black

A trusted coating for every situation

The IAQ 6000 Series of mold resistant coatings are extremely durable coatings developed to resist mold growth.* These easy to apply, 100% acrylic coatings are available in white (IAQ 6000), clear (IAQ 6100) and black (IAQ 6500). All IAQ 6000 Series coatings contain a fungistatic agent to resist mold growth on the dry coating surface.

The IAQ 6000 Series of coatings are recommended for use on plaster, wallboard, sheetrock, concrete, masonry block, wood, primed metal and galvanized metal.

- Tested by independent laboratories
- Mold resistant*
- Tintable formula (white version only)



Before and after: IAQ 6100 applied to an attic in Cape May, NJ.

*Resistant to mold growth on the dry coating surface only





NEXT GENERATION MOLD RESISTANT COATING*

IAQ 6000 GEN3 | A next generation 50 state VOC compliant product that is formulated with a unique fungistatic agent to resist mold growth on the dry coating surface. IAQ 6000 GEN3 is a white, tintable and durable 100% acrylic water based coating for professional use. IAQ 6000 GEN3 has successfully passed ASTM G-21 mold resistance testing with the highest possible score. IAQ 6000 GEN3 is recommended for use on wood, plaster, wallboard, sheetrock, concrete, masonry block, primed metal and galvanized metal.



HEAVY DUTY MOLD RESISTANT COATING*

IAQ 6000HD | A white, tintable, high-build coating for use during new building construction which resists mold growth. IAQ 6000HD contains a fungistatic agent to resist mold growth on the dry coating surface. IAQ 6000HD is a durable and flexible 100% acrylic water based flat coating. IAQ 6000HD is designed for use on non-porous and semi-porous building materials including gypsum wallboard, oriented-strand board (OSB), wood framing timbers, plywood, masonry block, and many other structural surfaces where a flexible, high-build mold resistant coating is necessary.



MOLD RESISTANT SEALANT*

IAQ 6040 | A low-viscosity, translucent violet, mold resistant sealant designed for use on new construction materials.* This specially formulated, water based coating contains a fungistatic agent to resist mold growth on the dry coating surface. The low-viscosity 100% acrylic formula is easy to apply, and the translucent finish will not block the appearance of coated building materials. IAQ 6040 can be applied to wood, OSB, wallboard, concrete and other construction materials.

*Resists mold growth on the dry coating surface only

PRIMERS AND SEALERS

IAQ 3000 | A high quality, white, interior and exterior block filler formulated to fill small imperfections and pinholes in masonry block and porous concrete before top coating. IAQ 3000 contains mineral type fillers and fine mineral aggregates that fill voids in masonry surfaces. This 100% acrylic block filler is easy to apply, alkali resistant and provides a uniform surface capable of receiving all types of finish coats. IAQ 3000 is ideal for application to masonry block, concrete, brick and stone. IAQ 3000 is not water sensitive after application and its flexibility and durability are the best available for a block filler, far superior to cementitious and PVA type formulations.

IAQ 4000 | A white, rust inhibiting, 100% acrylic latex metal coating for use on ferrous metal, galvanized metal and other surfaces exposed to general industrial and atmospheric conditions. IAQ 4000 has excellent water resistance and excellent resistance to most alkalis, detergents and mild acids. IAQ 4000 is ideal for both new and previously coated roof decks, metal paneling, structural steel, corrugated metal siding, and miscellaneous iron and bar joists.

IAQ 5000 | A white, quick drying, high performance 100% acrylic latex coating specifically designed to prime stained or water damaged surfaces. IAQ 5000 provides exceptional adhesion and stain blocking properties and may be used on interior or exterior surfaces to prevent most bleeding type stains, seal porous surfaces and provide adhesion to hard and glossy surfaces. IAQ 5000 also contains a fungistatic agent to resist mold growth on the coating surface. IAQ 5000 provides maximum breathability, adhesion, and holdout to prolong the life of the finish. IAQ 5000 is recommended for use on wallboard, plaster, sheetrock, masonry, wood, concrete, aluminum, and galvanized metal.



IAQ 7000 Series

Penetrating HVAC sealants for customers who demand the best, available in white (IAQ 7000) and clear (IAQ 7500).

The IAQ 7000 Series of HVAC sealants are durable, flexible and moisture resistant penetrating coatings for duct insulation that increase airflow while minimizing dust buildup in HVAC systems. Available in white (IAQ 7000) and clear (IAQ 7500).

The IAQ 7000 Series contains a fungistatic agent to resist mold growth on the coating surface. Manufactured from premium acrylic resins, the IAQ 7000 Series allow for optimal durability and flexibility and can be used in residential, commercial, or industrial facilities. The IAQ 7000 Series is acceptable for use over faced or unfaced fiberglass duct liner insulation, unfaced fiberglass duct board insulation and can be used in unlined duct work. The IAQ 7000 Series can also be used as a post-cleaning lockdown of inanimate residual particulates such as, fiberglass, dust, and dirt.

- Meets NFPA 90A/90B
- Penetrating coating for lined ductwork
- Lockdown for inanimate particulate contamination



Before and after: IAQ 7000 applied to metal duct work.

IAQ 8000 Series

High build HVAC sealants, available in white and black

The IAQ 8000 Series of HVAC sealants are high performance coatings for use in duct work. These high-build coatings are designed to bridge and reinforce duct liner or duct board insulation materials. The IAQ 8000 Series can also be used to seal unlined duct work prior to component removal, preventing fiberglass and inanimate particulate from becoming airborne. Available in white (IAQ 8000) and black (IAQ 8500).

The IAQ 8000 Series dries to form a durable, flexible, moisture-resistant protective coating with a semi-gloss finish that minimizes dust buildup on the coating surface. The high viscosity provides maximum bridging ability on insulation materials and reduces sagging and dripping when applied to the vertical and top surfaces of unlined duct.

- Meets NFPA 90A/90B
- Resurfaces and encapsulates fiberglass lined duct work
- Resists mold growth*



Before and after: IAQ 8500 applied to fiberglass insulation in duct work.

*Resists mold growth on the dry coating surface only



IAQ 9000

Mold Resistant Masonry Waterproofer*

IAQ 9000 is a white waterproofing coating that is specially formulated to stop water from penetrating through a variety of interior and exterior surfaces including above or below grade masonry walls, cinder and concrete blocks, stucco, brick, retaining walls, basements, and foundations. This latex based formula stops 10 psi of water pressure (greater than a wall of water 22 feet high). IAQ 9000 contains a fungistatic agent to resist mold growth on the surface of the coating. This fast-drying formula may be applied with a brush and/or roller on dry surfaces and cleans up easily with soap and water.

- Holds back 10 psi of water pressure
- Latex based formulation
- Tintable



Before and after: IAQ 9000 applied to the interior side of a cinderblock basement foundation wall.

*Resists mold growth on the coating surface only

When Disasters Strike

Fiberlock Technologies prides itself on providing assistance in the wake of natural disasters. As a leading manufacturer of disaster recovery products, Fiberlock understands the impact of these disasters and works closely with the public and private sectors to help optimize cleanup efforts. Fiberlock products have been used extensively during recovery efforts in the aftermath of major storms and hurricanes, including: Hurricane Katrina, Rita, Ike, Irene, Sandy and Tropical Storm Lee.



Lead Abatement Products

Childhood lead poisoning has been designated the number one environmental health threat to American children under the age of six, and lead-based paint is the most significant source of lead exposure today. The U.S. Department of Housing and Urban Development has stated: "Fully 90 percent of privately owned [housing] units built before 1940, 80 percent of units built between 1940 and 1959, and 62 percent of units built between 1960 and 1979 contain some lead-based paint." This environmental hazard often cannot be removed safely or cost effectively. Encapsulation of lead-based paint using approved products is a recognized method of abatement with over 20 years of proven results. This method eliminates the costly and labor intensive practice of mechanical removal. If removal must occur, chemical methods can remove lead paint without generating hazardous dust and debris.

Fiberlock's line of lead abatement products help address many of the complex challenges involved with the abatement process. From permanent encapsulation with LBC Lead Barrier Compound, to complete removal utilizing one of our Piranha advanced paint removers, Fiberlock has everything you need. In addition, Fiberlock offers LeadSafe Wipes and LeadSafe Cleaner for the safe and effective clean up of lead dust.



National Gallery of Art uses LBC

The National Gallery of Art in Washington, DC is one of the country's most distinguished museums that houses some of the finest paintings, sculptures and graphic arts.

In 1996, a major renovation project that required large-scale decontamination work was undertaken. The entire skylight system in the museum's attic was replaced. After the skylights were removed and replaced, it quickly became apparent that the surrounding area in the attic was in poor condition, including chipping paint and rust. The area was also found to be contaminated with lead-based paint.

Over 200,000 square feet of walls, ceilings, windows, skylights and steel support beams for the skylight system in the attic needed to be abated. Because of the unique style of construction and intricate architecture within the museum's attic, a cost-effective and simple solution for abatement had to be found.

Since the National Gallery of Art wanted the safest, fastest, and most economical solution available, encapsulation was found to be the only practical method of abatement for the museum's requirements. The abatement contractor in charge of the job chose LBC. It was selected because it meets all ASTM standards, is UL classified and has been independently tested and certified by an accredited laboratory. There were also strict color requirements that needed to be met by the gallery and LBC was able to be custom matched to meet these standards.

Fiberlock recently visited the National Gallery of Art where LBC was applied over 20 years ago and it is still standing strong today.



A view from inside the museum with skylights overhead



A view from inside the attic after LBC was applied

LBC - Lead Barrier Compound

Professional Lead Encapsulant



LBC Lead Barrier Compound (Type III - Interior/Exterior) is a thermoplastic-elastomeric water based copolymer blended specifically to form a barrier between lead-based paint and the environment. It is a high-solids coating formulated to offer unparalleled coverage, economics and aesthetics while preserving historic and architectural detail. LBC contains Bitrex®, a bitter-tasting ingredient to discourage oral contact with lead paint. LBC complies with all EPA and HUD requirements for lead-based paint encapsulants and is recognized as a permanent method for abatement of lead-based paint. LBC meets all Federal, State and Local standards for lead-based paint encapsulants. LBC has been independently tested and was found to meet and surpass the ASTM E-1795 Standard for Lead-Based Paint Encapsulants for both indoor and outdoor use.

- For use in all 50 states
- UL Classified
- Class A fire rated
- Permanent lead abatement solution
- Contains a bitter tasting anti-ingestant

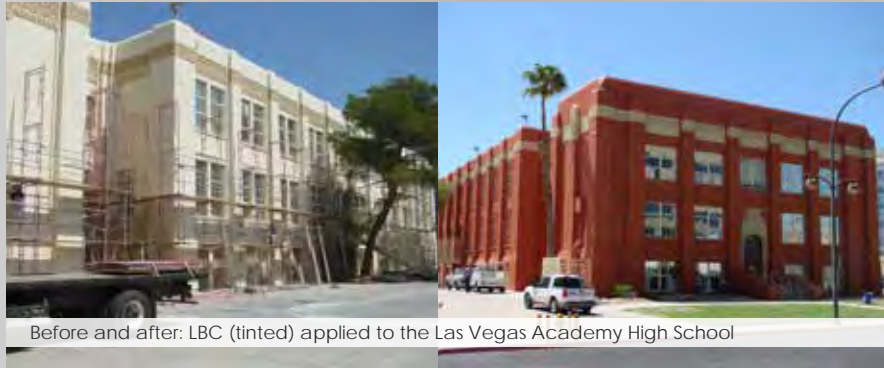
ChildGuard

Consumer Lead Encapsulant Paint

Available for the consumer in convenient one gallon cans, ChildGuard is a safe and effective alternative to the costly process of lead-based paint removal and offers the same great features and benefits as LBC.



Approvals & Certifications



Before and after: LBC (tinted) applied to the Las Vegas Academy High School

LABORATORY PRODUCT TESTING

- LBC Lead Barrier Compound is Underwriters Laboratories (UL®) Classified, UL723, ASTM E84
- Class A Fire Rated, Flame Spread 0, Smoke Development 0
- Independently Certified for ASTM-E-1795 tests:
 - E84-97a, Surface Burn Characteristics for Building Materials
 - D3273, Mildew and Fungus Resistance
 - D2370, Strength Test
 - D1653, Method A Water Vapor Transmission
 - G53, Accelerated Weathering/Aging
 - D3359, Adhesion Tape Test
 - D4060, Dry Abrasion (Taber Abrasion)
 - D2486, Wet Abrasion (Scrub)
 - D2794, Impact Resistance
 - D3359, Paintability
 - D522, Elongation/Flex (Mandrel Bend)
 - D1308, Water and Chemical Resistance
 - D3960, Volatile Organic Compound Content
 - D4214, Chalking
 - EPA Method 24 VOS/VOC content
- UPIIT-Combustion Toxicity (Method for Fire Gas Toxicity)

FEDERAL ACCEPTANCE

- Environmental Protection Agency (EPA)
- Meets or exceeds all ASTM tests - Standard E-1795
- Department of Defense (DOD) Specified
- Department of Justice Specified
- Meets all OSHA standards
- Housing and Urban Development (HUD) Specified
- U.S. Army (USA), U.S. Navy (USN), U.S. Marine Corps (USMC), U.S. Air Force (USAF), and U.S. Coast Guard (USCG) Specified
- U.S. Army Corps of Engineers (ACOE) Specified, UFGS-02 83 19.00 10; formerly Section 13281A
- Approved for use in all 50 states

STATE AND MUNICIPAL CERTIFICATION

- Colorado Certified-Department of Public Health and Environment approved pursuant to Colorado Regulation No.19, Section V.G.4
- Connecticut Certified-Department of Public Health per section 19A-111c of Chapter 368A of the General Statute
- Maryland Certified-Reference Maryland Department of the Environment Approval List
- Massachusetts Certified-Department of Public Health, Childhood Lead Poisoning Prevention Program-Reference DL#12608 (DL Labs, NY-Accredited by the National Institute of Standards & Technology [NIST] for coatings and sealants)
- Michigan - Approved Michigan Department of Community Health, R 325-99406(10) Lead Hazard Control
- Minnesota Certified-Department of Health Permit No. E-99-4
- New Hampshire Acceptable Lead Encapsulants List, NH Department of Health and Human Services, He-P 1605.09
- New York State Dept. of Public Health Acceptable Encapsulant Products List; New York City Accepted Reference MEA #309 94-M Accepted for use per section 173.14 of the NYC Health Code - NYCDOH or NYHPD approval required when cited
- Ohio Approved pursuant to 3742.03(K) of the Ohio Administrative Code

LeadSafe Lead Dust Cleaner

Designed to remove harmful lead dust

LeadSafe Lead Dust Cleaner is a concentrated product designed specifically to assist in the cleanup of lead dust after lead abatement projects, construction, renovation or any other activity which disturbs lead and creates dust. This product has been formulated to remove more lead dust than ordinary cleaning products. LeadSafe Cleaner utilizes chelating agents similar to those given to individuals with lead poisoning. These chelating agents bind to the lead dust and help hold it in suspension so that it can be easily rinsed away.

- Contains active chelating agents
- Faster cleanup and compliance



LeadSafe Lead Dust Wipes

LeadSafe Lead Dust Wipes are conveniently packaged towelettes presoaked in a trisodium phosphate (TSP) solution to aid in surface preparation and cleaning for the quick removal of harmful lead dust. LeadSafe Wipes are ideal for use before and after any lead abatement project and are a critical part of a conscientious program for the Interim Control of lead-based paint dust hazards. LeadSafe Wipes meet all Federal, State, HUD and EPA guidelines for cleaning and removing lead dust.



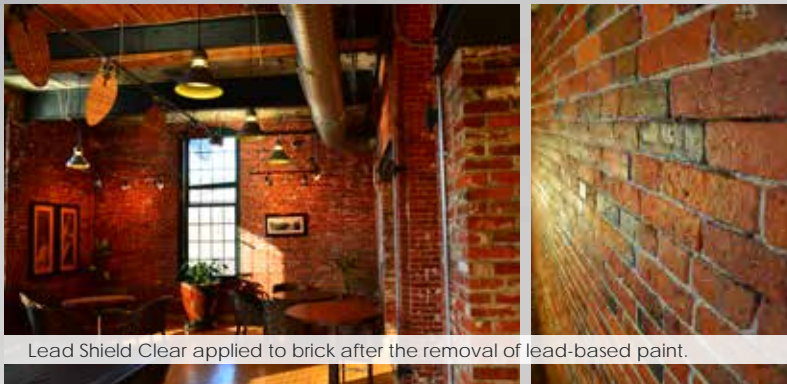
Lead Shield

Lockdown residual lead-based paint and dust present after removal

Lead Shield is a water based 100% acrylic lockdown with a dual purpose; it binds residual lead-based paint (LBP) and dust present after removal; and accepts most topical coverings. Lead Shield is a one-step product which bonds to most surfaces eliminating the need for sanding, priming and sizing recently stripped walls. Lead Shield can be used on both interior and exterior surfaces, and was expressly formulated to prepare these surfaces to accept a final topical covering. Lead Shield should not be used as a substitute for encapsulation.

The clear version of this product sprays on white and dries clear to permit visual inspection of any residual paint. Lead Shield is also available in translucent blue which speeds up the post removal inspection process. The blue tint enables an inspector to quickly identify areas that LBP has been removed from and subsequently locked down. These unique features assist in obtaining final LBP removal certification.

- For interior and exterior applications*
- Eliminates the need for sanding and priming on most surfaces



Lead Shield Clear applied to brick after the removal of lead-based paint.



*For exterior applications, LeadShield must be topcoated with an exterior grade acrylic coating.

Piranha Paint Removers

Fiberlock's Piranha Paint Strippers are specifically engineered to remove nearly any coating system from most substrates. From solvent gels to caustic pastes, Piranha professional paint strippers are the paint strippers of choice for the most effective coating removal.



Piranha NexStrip

Paste Paint Stripper

Piranha NexStrip is the next generation water based paint and coating remover. The unique paste formulation clings to and tenaciously attacks multiple layers of almost any coating system.

Easy to work with and easy to clean up, Piranha NexStrip does not contain methylene chloride, methanol, chlorinated solvents, caustics or petroleum-based solvents. It can be used on interior and exterior surfaces including concrete, brick, stone, aluminum, wood, fiberglass, plastic and other surfaces.

- Non-flammable
- Removes multiple paint layers
- Methylene Chloride free
- For interior or exterior use
- No neutralization required



Piranha NexStrip is ideally suited for use in hospitals or schools



Piranha NexStrip Pro

Maximum Strength, Dual-Action Paste Paint Stripper

Piranha NexStrip Pro is the next generation water based, maximum strength paint and coating remover. Piranha NexStrip Pro contains our unique dual action stripping formula. The first stage begins by attacking the paint system on contact. The second stage penetrates into the paint system and delaminates it from underneath for complete paint removal. This unique paste formulation clings to and tenaciously attacks multiple layers of almost any coating system.

Easy to work with and easy to clean up, Piranha NexStrip Pro does not contain methylene chloride, methanol, chlorinated solvents, caustics or petroleum-based solvents. Piranha NexStrip Pro is non-flammable and can be used on interior and exterior surfaces.

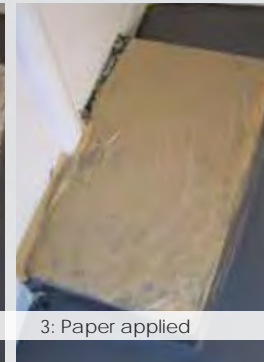
- Super strength dual-action stripping formula
- Removes the most stubborn paint systems
- Non-flammable
- Methylene Chloride free
- No neutralization required



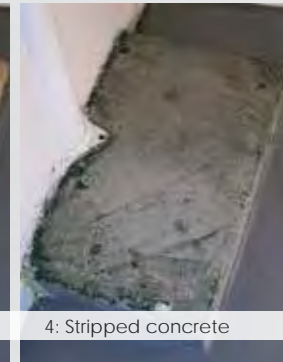
1: Painted concrete



2: Paste applied



3: Paper applied



4: Stripped concrete

Piranha NexStrip 8

Extreme Duty Self Skinning Caustic Paint Remover

Piranha NexStrip 8 is a self skinning caustic paste paint stripper that can liquefy up to 30 layers of paint on a variety of substrates. Piranha NexStrip 8 has an easy-to-apply, buttery-smooth texture that makes application easy. Piranha NexStrip 8 removes most paints, varnishes, and latex paints from metal, stone, concrete, brick, wood and plaster.

Ideal for multi-layer paint systems, Piranha NexStrip 8 is particularly well suited for stripping lead-based paints (including red lead primer) from painted steel structures. Surfaces must be neutralized after using Piranha NexStrip 8.

- Ideal for use on red lead primer
- Extreme duty self skinning caustic formula
- Attacks up to 30 layers of paint



Red lead primer on steel stripped with Piranha NexStrip 8



Piranha 2

Heavy Duty Paint Stripper

Piranha 2 is a heavy duty, fast acting paint remover for the professional. Utilizing the power of methylene chloride, Piranha 2 will attack multiple layers of paint in a single application. Piranha 2 will remove most oil and latex paints, varnishes, shellacs, lacquers and enamels. Piranha 2 is non-flammable and will not raise the grain of wood or corrode metals. This product does not require anti-evaporation paper like many caustics or other weaker solvent formulas.

- Instantly attacks multiple layers of paint
- Does not raise the grain of wood
- Removes oil and latex paints, varnish, shellacs, lacquers and enamels



Multiple layers of paint stripped by Piranha 2

Piranha 4

Gel Paint Stripper

Piranha 4 is a solvent-based gel formulated to remove multiple layers of paint. Piranha 4 starts removing most paints and stubborn coatings in less than one hour, without the use of chlorinated solvents, caustics or methylene chloride. The gel formulation yields maximum coverage per gallon and has excellent resistance to sagging, enabling it to cling to vertical and overhead surfaces. Piranha 4 has a very slow rate of evaporation keeping it active for hours.

Piranha 4 is a unique solvent formulation ideally suited for paint removal from historically significant architectural components since it does not discolor or raise wood grain or require neutralization. Piranha 4 can be used on virtually any substrate to remove oil-based paints, latex paints, elastomeric paints, cementitious asbestos paints, epoxies and urethanes.

- Does not contain chlorinated solvents, caustics, or methylene chloride
- Low evaporation rate extends active performance
- Excellent resistance to sagging
- Extraordinary coverage reduces material cost



Piranha 4 removing multiple layers of lead based paint from wood trim



Piranha 8

Multi-Layer Paint and Varnish Remover

Piranha 8 is an alkaline paste paint stripper that liquefies paints on a variety of substrates. Piranha 8 removes most paints, varnishes, polyurethanes, and water based latex paints from metal, stone, and concrete. Piranha 8 can remove multiple coats safely and easily in a single application. Piranha 8 is particularly well suited for stripping lead paints, including red lead primer from metals. Surfaces must be neutralized after using Piranha 8.

- Attacks up to 30 layers of paint
- Removes oil and latex paints, varnish, shellacs, lacquers and enamels



Before and after: Piranha 8 was used to remove lead paint from the interior and exterior of the Historic Mound House in Fort Myers Beach, FL. LBC was then used as an encapsulant in all areas where the lead paint was removed.

Piranha Accessories

Piranha Paper

Piranha paper is specifically designed to increase application dwell time for most Piranha and Piranha NexStrip Paint removers. Increased application dwell times can significantly enhance chemical paint removal by preventing the paint remover from evaporating and drying out prematurely. In addition, Piranha Paper helps to ensure direct contact between the Piranha paint remover and the underlying substrate. Available in either 13" x 300 ft. or 36" x 100 ft. rolls, Piranha Paper is easy to apply and cost effective.



Piranha Neutralizer

Piranha Neutralizer is an easy to use neutralizing agent that must be applied after using Fiberlock's Piranha 8 and Piranha NexStrip 8. Piranha Neutralizer is suitable for use on interior and exterior surfaces including concrete, brick, stone, metal, wood, fiberglass and other similar surfaces. Wood surfaces may darken after using Piranha 8 and Piranha NexStrip 8. Apply a solution of Piranha Neutralizer to help restore the natural color of wood surfaces.



Asbestos Abatement Products

Fiberlock's asbestos abatement products address nearly every type of asbestos containing material (ACM). Our industry leading asbestos abatement and thermal insulation repair products include penetrating encapsulants, bridging encapsulants, wetting agents, rewettable cloths and high temperature insulation repair products. Not only do our asbestos abatement products offer the superior quality and solid testing data that you expect from Fiberlock Technologies, they also offer a level of flexibility that few other products can match.

Due to the myriad of substrates on any given job, a combination of products and application techniques may be required. Products like ABC Asbestos Binding Compound and Lag-Kote are flexible tools for your abatement toolbox, while ABC Fiberspray offers a unique airless spray-can technology that makes working in glove bags or sealing core samples quick and easy.





ABC

Asbestos Binding Compound

ABC Asbestos Binding Compound is a high solids asbestos encapsulant/sealant, designed to encapsulate friable Asbestos Containing Material (ACM) such as fireproofing and insulation material. ABC is an important tool for managing the health hazards associated with exposure to asbestos fibers. In 1978, ABC was tested for the EPA under contract #68-03-2552-T2005 by Battelle Laboratories of Columbus, Ohio, and found to meet the requirements for the effective encapsulation and removal of ACM. The high solids, non-flammable composition of ABC allows for dilution with water to provide maximum flexibility for specific asbestos abatement needs, including lockdown, removal, penetrating encapsulation and bridging encapsulation. ABC is also an effective tool for controlling the documented health hazard of exposure to asbestos fibers found present in soil.

- Encapsulates fireproofing and soil
- Class A fire rated
- Exceeds EPA standards for encapsulation
- Available in off-white, clear and green



ABC Fiberspray

ABC Fiberspray is the same great formula as ABC Asbestos Binding Compound, offered in a convenient “airless spray” can. ABC Fiberspray dispenses encapsulant from a unique 8 ounce bladder inside of the can. This CFC-free “airless spray” technology minimizes asbestos fiber release, and permits application of encapsulant in any position, even upside down.

- Ideal for use inside glove bags
- Unique spraying technology enables application at any angle



ABC Green applied to asbestos containing fireproofing on structural steel beams

T B C

Specifically formulated for transite encapsulation

TBC Transite Barrier Compound is a white, elastomeric thermoplastic water based copolymer, blended specifically to seal exterior asbestos containing Industrial Fiber Cement Board (Transite®). TBC is a high solids blend of resins that forms a hard yet flexible finish which is ultraviolet resistant and mildew resistant. It complies with all federal and state VOC requirements.

- UV & mold resistant*
- Class A fire rated
- High solids formula
- Interior/Exterior



The Puget Sound Naval Shipyard (PSNS): Bremerton, Washington. Building 460 was built in 1940-1941 and was used to repair and upgrade battleships during World War II. The exterior of Building 460, a total surface area of 178,000 sq.ft., consisted of cementitious structural siding panels that contained asbestos. The siding was chalking, powdery, and in some places, friable. TBC was one of three Fiberlock products used for a cost effective, permanent system of solutions for the challenges posed by the aged lead and asbestos containing exterior surfaces of the building.



*Prevents mold on the surface of the dry coating only



Penewet

Wetting agent & surfactant

Penewet is a ready-to-use, colorless wetting agent/surfactant solution incorporating advanced concepts in surface chemistry. It provides superior wetting, penetrating and coalescing of Asbestos Containing Material (ACM) to permit handling and removal of these materials under damp, dust-free conditions. Penewet is a non-flammable, water based liquid that will not corrode aluminum components of spray equipment.

- Ready to use formula
- Surface Tension: 27 dynes/cm
- Satisfies NESHAP requirements
- Penetrates and “wets out” asbestos to help create a damp, dust-free environment

FiberSet PM

UL classified post removal surface sealant

FiberSet PM is a pre-mixed “lockdown” sealing treatment for microscopic residual fibers present after the removal of Asbestos Containing Material (ACM). Available in white, blue or clear, FiberSet PM is a ready-to-use, Class A fire rated coating that provides a flexible barrier over residual fibers to ensure final air clearance. FiberSet PM is UL® classified for use as a primer for fireproofing replacement materials under the “Encapsulant Materials” section of the UL directory, and is compatible with leading brands of flooring adhesives. FiberSet PM is a water based coating that employs advanced 100% acrylic resin technology to extend the life expectancy of airless spray equipment.

- UL classified
- Class A fire rated
- Ideal for use as a pull-down
- Compatible with many flooring adhesives



Application of FiberSet PM





Lag-Kote

Interior and Exterior Asbestos Lagging Encapsulant

Lag-Kote is a white, 100% acrylic, high solids encapsulant/sealant specifically formulated for application over a variety of Asbestos Containing Materials (ACM). Tested at Battelle Laboratories of Columbus, Ohio, under EPA Contract #08-03-2552-T2005, Lag-Kote was found to be acceptable as an asbestos encapsulant. Designed to encase spray-on fireproofing, asbestos-containing plasters and paints, transite, and asbestos-containing thermal insulation, Lag-Kote's viscous formulation minimizes dripping, cleanup and product waste. Lag-Kote provides a smooth, washable, aesthetically superior finish that will provide years of lasting protection. Lag-Kote has excellent resistance to alkalis and can be applied directly over galvanized metal, wood, masonry or other sound surfaces. UV inhibitors make Lag-Kote suitable for encasement of exterior transite siding and asbestos fortified paint systems. Lag-Kote is water based.

- Ideal for use on thermal insulation
- Excellent resistance to alkalis
- UV and rust resistant
- EPA accepted encapsulant



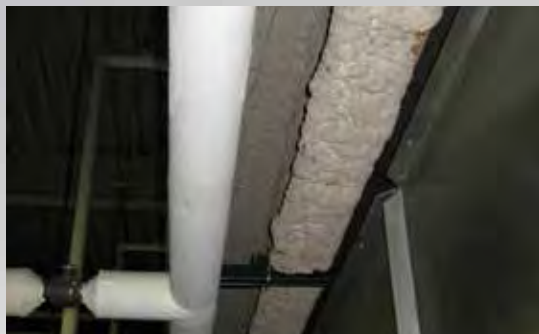
Lag-Kote applied to asbestos pipe insulation

Lag-Kote II

Specifically formulated for interior application

Lag-Kote II is a thick bridging encapsulant/sealant specifically formulated for application over interior friable Asbestos Containing Material (ACM). It is ideally suited to encapsulate interior pipe lagging, boiler jackets, breeching and other components of heating and ventilation systems. Its thick body minimizes dripping, cleanup and product waste while providing a smooth, washable, aesthetically superior finish that will provide years of protection. Lag-Kote II is a flexible coating that can be applied over galvanized metal, wood, masonry or other sound surfaces to prevent the release of harmful asbestos fibers.

- Ideal for use on interior pipe lagging, boiler jackets and breeching
- Smooth, washable white finish
- Ideal for application to popcorn ceilings and interior transite



Lag-Kote II applied to asbestos pipe insulation



Lag-Kloth

Designed to repair and/or cover existing asbestos insulation on pipes

Lag-Kloth is a woven fabric impregnated with an inorganic adhesive, designed to repair and/or cover existing asbestos insulation on pipes, boilers and breeching. Areas that are repaired or re-covered with Lag-Kloth can be successfully top coated with Lag-Kote®, Lag-Kote II or SerpiMastic for complete encapsulation. The self-contained adhesive in Lag-Kloth is water activated and non-flammable. Lag-Kloth can withstand temperatures up to 600°F.

- Water activated
- Withstands temperatures up to 600°F
- Top coat with Lag-Kote, Lag-Kote II or SerpiMastic for complete encapsulation
- Available in three convenient sizes: 5' x 15' Blankets, 5' x 150' Rolls and 4" x 150' Tape Strips



Pipe wrapped in Lag-Kloth

Klean-Pop Shower

Mobile Decontamination Shower

The Klean-Pop shower is a revolution in pop-up shower design. When disassembled, Klean-Pop offers the easy mobility and compact appearance of a suitcase on wheels. One person can move Klean-Pop wherever it needs to be, and set up the shower in as little as 2 minutes. Priced competitively with telescoping designs, and more durable than plastic options, Klean-Pop answers the growing need for a quality decontamination shower that is inexpensive, durable and easy-to-use.

- **Compact When Collapsed** | Easy and efficient transport and storage. Occupies less space in truck or warehouse than conventional telescoping shower designs.
- **Inset Wheels, Built in Handle & Lightweight Design** | As portable as a suitcase. Easy for one person to move from place to place. Set-back wheel design makes stacking for storage or transport easy. Lighter than conventional telescoping shower designs.
- **Rugged Aluminum Construction** | Rigid and durable when assembled.
- **Unique Set-Up Design** | One person set-up in as little as two minutes. Two curtains with rings already mounted on ceiling rods for privacy. Curtains are easily changed or removed when desired, and replacements are available.
- **All-Brass, Strategically-Located Mixing Valve** | Quality durable fixture designed to last; mounted on ceiling so equipment can be moved through decon.
- **Dimensions** | Assembled Size: 30"L x 30"W x 83"H | Collapsed Size: 30"L x 30"W x 10"H



SerpiFlex

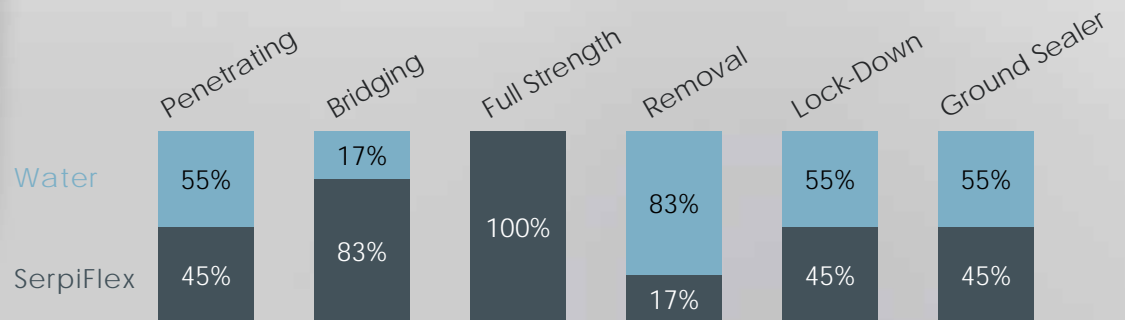
Multi-Use Asbestos Encapsulant



SerpiFlex Asbestos Encapsulant is a white, concentrated, water based vinyl acrylic product that can serve your abatement needs for bridging, penetrating, removal, lockdown and soil encapsulation. In testing done by Battelle Laboratories under EPA contract, SerpiFlex was deemed acceptable for the encapsulation of asbestos containing material (ACM). SerpiFlex is also UL® classified as both a bridging encapsulant and penetrating encapsulant for use with classified sprayed fiber (UL Category CBUI: Encapsulant Materials). It is non-combustible and does not contain any solvents or silicates.

- Can be used for all types of asbestos abatement, including encapsulation, lockdown, and removal
- Concentrated formula saves transportation and labor cost
- Tested and found to be effective for up to 20 years
- Maintains the fire protective properties of the asbestos substrate and has negligible effects on its acoustic properties

Dilutable for every situation



SerpiMastic

Heavy Duty Asbestos Encasement Coating

SerpiMastic is an off-white, high solids, water based, high performance mastic coating. Two viscosity grades are available: Sprayable and Trowelable. SerpiMastic dries to an ultra durable, weather-resistant protective coating that provides high impact protection for asbestos, cement asbestos board and thermal/insulations on boilers and pipes. SerpiMastic is also UL® classified as a bridging encapsulant for use with classified sprayed fiber and cementitious mixtures (UL Category CBUL: Encapsulant Materials).

- Weather, UV and chemical resistant
- Extremely durable
- Resists impact up to 160 psi
- Trowelable version is ideal for painters mitt/palm application



SerpiMastic Sprayable, tinted green, was used to encapsulate corrugated asbestos roofing and siding.

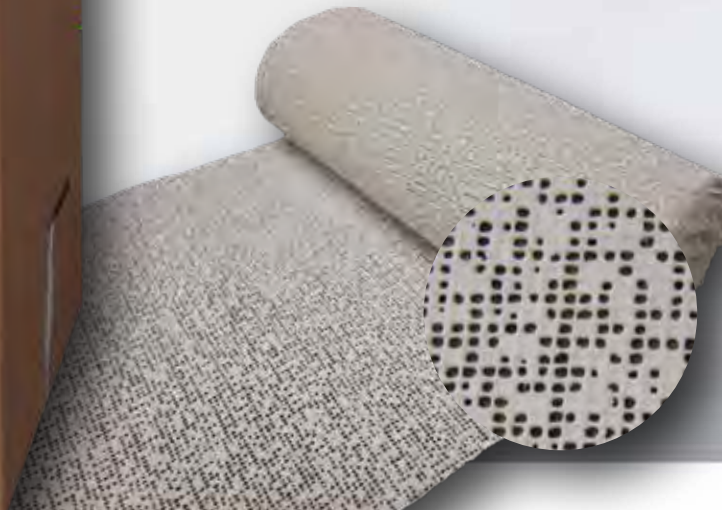


Wet Wrap 'N' Seal

Water Activated Encasement Repair Cloth

Wet-Wrap 'N' Seal is a permanent insulation encasement and repair system. It quickly covers pipes, breeching, valves, duct work and other fittings. Wet-Wrap 'N' Seal applies quickly and easily. Once dry, it permanently retains its strength, shape and form. Wet Wrap 'N' Seal is the lowest cost encasement material available. Using Wet Wrap 'N' Seal followed by applying a bridging encapsulant satisfies procedures specified by the National Institute of Building Sciences in 1986 for the proper repair of insulation and lagging. For a bridging encapsulant, use SerpiMastic, Lag-Kote or Lag-Kote II. Available in 4", 6" and 8" x 9' rolls.

- Applies quickly and easily
- High-strength
- Pre-cut to 9 ft. (2.7m) lengths
- One-step installation
- Saves time and labor
- No maintenance
- No special skills or tools required



Barrier Coat II

Lead Encapsulant Coating

Barrier Coat II Lead Encapsulant Coating is a white, copolymer acrylic based coating that features 54% solids and meets or exceeds existing standards for lead encapsulants. In addition, Barrier Coat II has excellent film flexibility, superb adhesion and creates a tough surface with outstanding impact and abrasion resistance. It can be applied quickly by spray, roller or brush.

- Meets the ASTM E 1795 Standard (Interior/Exterior)
- High Solids (54% by volume)
- 123 ft²/gal (3m²/L) at 7 mils dry
- Cost-effective (one coat application)
- Easy to apply (spray, brush or roller)
- Excellent impact/abrasion and UV resistance
- Excellent adhesion and chemical resistance
- Contains an anti-ingestant (Bitrex®)
- Mold resistant*
- Can be painted over with most latex paints



*Resists mold growth on the dry coating surface only

Power Block

Quick drying latex primer

Power Block is a white, quick drying, high performance 100% acrylic latex coating specifically designed for prime stained or water damaged surfaces. Power Block can be used on interior or exterior surfaces to prevent most bleeding type stains, seal porous surfaces and provide adhesion to hard and glossy surfaces.

- Superior stain blocking
- Interior and exterior primer
- Excellent adhesion to glossy surfaces

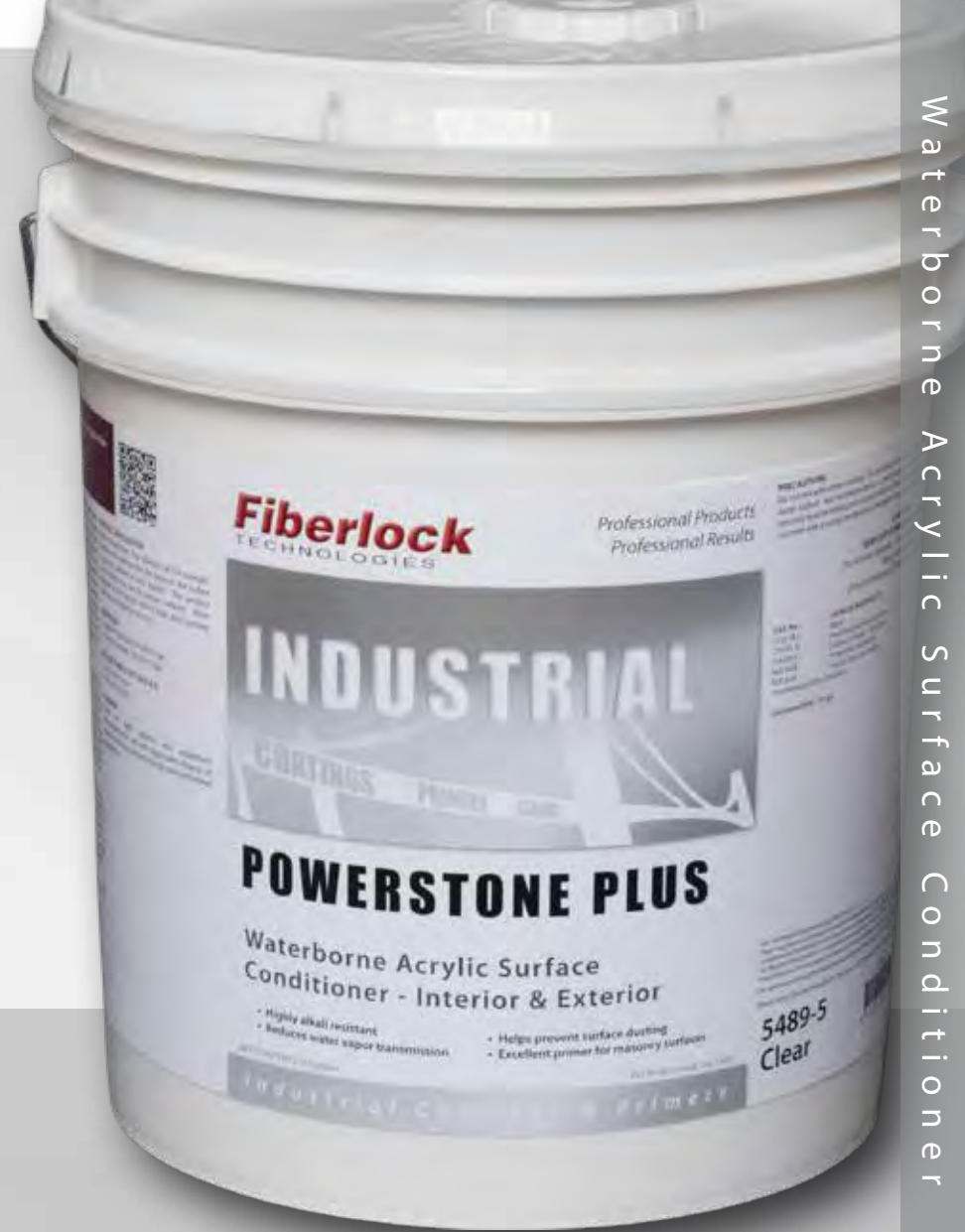


PowerStone Plus

A multipurpose primer that protects a variety of surfaces

PowerStone Plus is a clear, multipurpose, waterborne acrylic primer that provides protection to a large variety of surfaces. This highly alkali resistant coating resists household cleaners, gasoline, oil and efflorescence. PowerStone Plus seals brick, block and poured concrete to reduce water penetration and prevent surface dusting and staining. PowerStone Plus can be applied to both horizontal and vertical surfaces and is ideal for use on concrete, plaster, brick, slate and stucco. Clean metal surfaces of copper and aluminum can be finished with PowerStone Plus to prevent surface oxidation.

- Highly alkali resistant
- Reduces water vapor transmission
- Helps prevent surface dusting
- Excellent primer for masonry surfaces

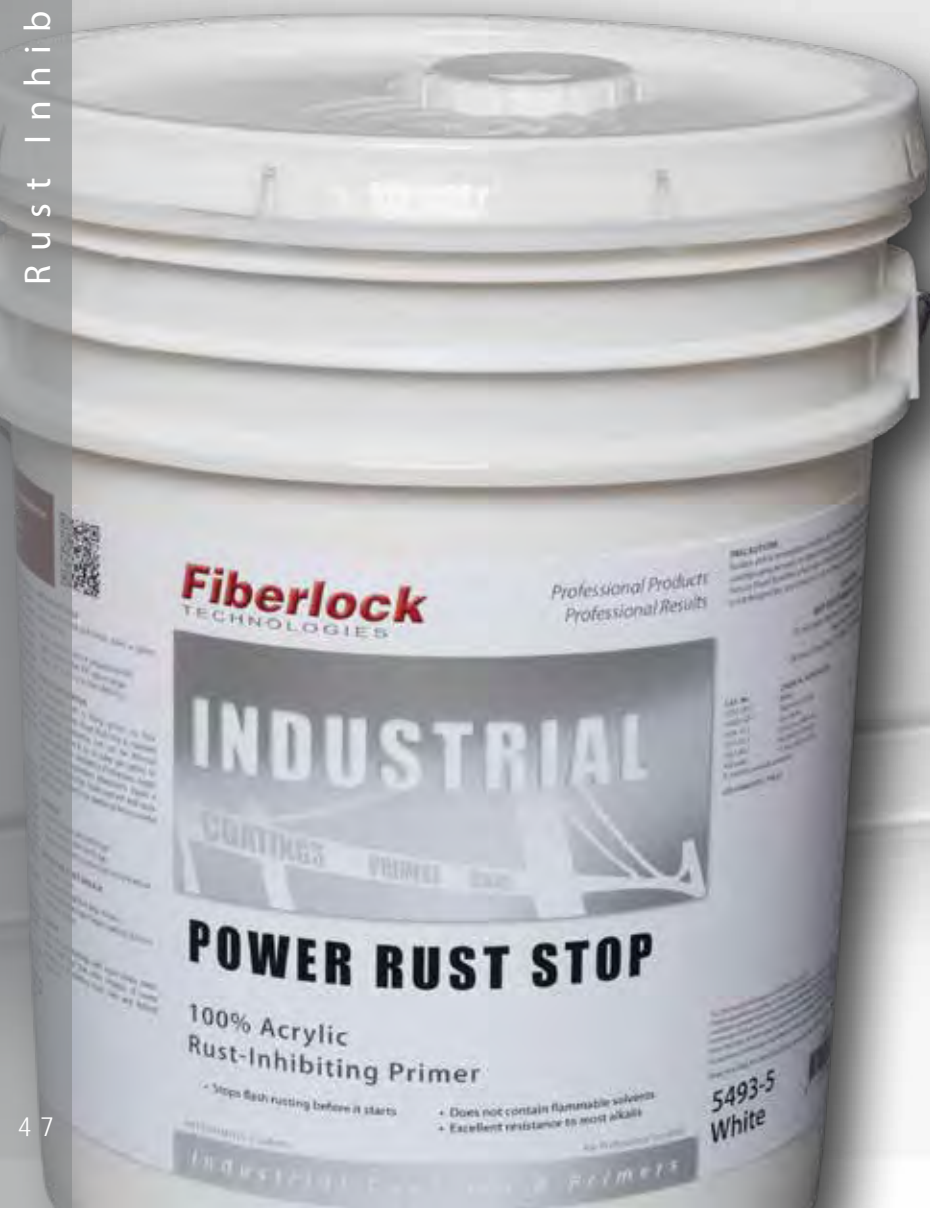


Power Rust Stop

Rust inhibiting 100% acrylic primer

Power Rust Stop is a white, rust inhibiting, 100% acrylic latex direct-to-metal (DTM) coating for use on ferrous metal, galvanized metal and other surfaces exposed to general industrial and atmospheric conditions. Power Rust Stop has excellent aliphatic solvent and water resistance and excellent resistance to most alkalies, detergents and mild acids. This acrylic latex DTM coating does not contain the flammable solvents found in other rust inhibiting paints.

- Stops flash rusting before it starts
- Fast drying formula
- Does not contain flammable solvents
- Excellent resistance to most alkalis



Grip-Tack

Tacky membrane designed to lock down residual hazardous materials

Grip-Tack is a clear, high solids, water based multipurpose lockdown/adhesive for capturing and sealing residual contaminants present before, during and after demolition or removal projects. Its unique formulation provides a soft, tacky, flexible membrane, which locks down asbestos fibers, lead paint chips and dust to ensure final clearance after the removal of lead and/or asbestos. The sticky finish traps lead dust and airborne fibers making it ideal for over-coating lead paint or asbestos prior to their removal or demolition. This product is also suitable for use as a lead paint adhesive primer for use over high gloss surfaces containing lead paint.

- Adhesive primer
- Demolition adhesive



Grip-Tack, tinted blue, sprayed on rebar to lockdown low level radioactive particulate.



Disaster Restoration Products

Fiberlock's RECON line of disaster restoration products are designed to be the most effective solution for fire, smoke and water damage restoration. From cleaners to odor counteractants and smoke odor sealers, Fiberlock has a product for every situation that demands the best results.

SMOKE AND FIRE DAMAGE • FLOOD AND WATER DAMAGE • DISASTER RESTORATION



The Worst Demands The Best™



ULTRA Smoke Odor Sealer

Ideal for structural, finished and decorative surfaces

ULTRA RECON Smoke Odor Sealer is a premium solvent free smoke odor sealant and stain blocker designed to eliminate malodors on multiple surfaces and block tough staining. Ideal for structural, finished and decorative surfaces, ULTRA RECON Smoke Odor Sealer with OdorLock Plus technology is water based and does not contain flammable solvents. This multiphase technology provides one coat odor control on most surfaces and continues to block odors even with seasonal changes in temperature and humidity.

- Finish grade, solvent free
- One coat odor control
- Blocks tough stains
- Moisture permeable
- Tintable
- Eliminates malodors on multiple surfaces
- Blocks pet & trauma scene odors
- Easily accepts topcoat



FINISHED SURFACES



STRUCTURAL SURFACES



Available in
White, Clear and Woodtone

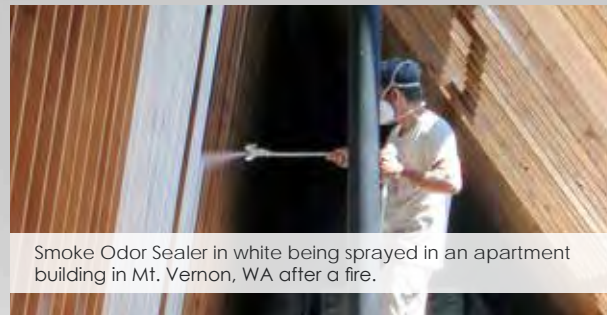
Smoke Odor Sealer

Structural restoration sealer

RECON Smoke Odor Sealer is a revolutionary solvent free smoke odor sealant and stain blocker designed to encapsulate malodors on structural surfaces and block the toughest stains. RECON Smoke Odor Sealer with OdorLock technology is water based, permeable and is not flammable.

Unlike typical water based coatings that “wick” smoke odors and stains out of the substrate as they dry, RECON Smoke Odor Sealer with OdorLock technology prevents smoke odors and stains from migrating through the coating while maintaining its breathability. This technology provides one coat odor control and continues to block odors even with seasonal changes in temperature and humidity. RECON Smoke Odor Sealer is your final step to encapsulate residual odors typically found on fire damage restoration projects.

- Permanently encapsulates smoke odors
- Highly permeable, doesn't trap moisture
- Can be applied in ductwork
- Available in a tintable white or clear
- Excellent stainblocker
- Water based and non-flammable
- Bonds to nearly any substrate
- Ideal for use in wall cavities



Smoke Odor Sealer in white being sprayed in an apartment building in Mt. Vernon, WA after a fire.

ASTM E 96B Water Vapor Permeance Test		
Product	Dry Film Thickness	Perm Rating
3090-White	10 dry mils	19.274 perms
3091-Clear	10 dry mils	12.363 perms

Extreme Duty Odor Counteractant

One of the most powerful odor neutralizers available

RECON Extreme Duty Odor Counteractant is a highly concentrated liquid odor counteractant formulated specifically for the treatment of surfaces after fire, water or smoke damage. This product chemically neutralizes the source of malodors and imparts a pleasant, long-lasting fragrance. RECON Extreme Duty Odor Counteractant removes odors caused by tobacco, smoke, urine, pets, garbage, fire-produced odors, and cooking odors. Ideal for use in institutions, hospitals, apartments, sanitariums, restaurants, factories, schools, hotels, kitchens, restrooms, latrines, septic systems, dumpsters, paper mills, recreational vehicles or anywhere odors are a problem. May also be used as a deodorant booster for carpet cleaners and general purpose cleaners.

- Maximum strength odor counteractant
- Apply by spraying or as a cleaning additive
- Can be applied with cold mist fogging equipment



RECON Extreme Duty Odor Counteractant can be used to neutralize the most extreme odors caused by fire and smoke damage.



CLEANERS

RECON Citrus Solvent Cleaner | An advanced degreaser and deodorizer that utilizes a citrus based solvent. This multipurpose concentrate instantly emulsifies grease, oils and fats without the use of harsh acids, caustics/alkalines, petroleum distillates, butyl solvents, chlorinated solvents or ozone depleters. This citrus based, ready-to-use product has an extremely powerful cleaning ability with a pleasant natural citrus fragrance to deodorize effectively even under the most extreme conditions.

RECON Heavy Duty Cleaner | A powerful, water soluble, cleaner and degreaser. Due to its chemical potency, this product is extremely effective in the removal of heavy accumulations of grease, oil, fats, carbon, ink, wax, dirt, soot, tar, asphalt, creosote, rust stains and many soils. It contains a fast acting powerful solubilizing agent that dissolves and suspends any soil, allowing it to be wiped or rinsed away completely.

RECON Extreme Duty Cleaner | One of the most powerful cleaning products available anywhere. Formulated to handle the most extreme cleaning jobs, this high pH, caustic fortified, butyl based product provides superior ease of use in removing grease, oils, fats, carbon, wax, tar and other stubborn soils. RECON Extreme Duty Cleaner is a very high pH butyl cleaner for cleaning and removing the worst deposits in fire, smoke and water damage restoration applications.



Kontrol Kube

Mobile Containment Solutions

Kontrol Kube's are mobile containment and isolation units designed to quickly and easily establish a temporary negative pressure environment. They are ideal for the control of airborne particulate during hospital renovations, construction and repairs, or for temporary patient isolation and increased surge capacity.

The Kontrol Kube line offers a full suite of products when overhead containment is needed for maintenance or repairs such as cabling, light bulb replacement, HVAC access or any other above ceiling work. In addition, the collapsible soft sided units can also be used for wall access when performing work such as plumbing or installing power and communications outlets. All Kontrol Kube units are 30" wide so they can be quickly moved through all AIA and NFPA compliant doors to any area where dust and particulate control or patient isolation is needed.



The benefits of using a Kontrol Kube include:

- Increased labor savings and increased worker productivity
- Reduced disposable containment materials costs
- Reduced room and department closure costs with targeted containment
- Reduced risk of Healthcare Associated Infections (HAI's) and the associated liabilities

Kontrol Kube HardPanel

Maximum durability, flexibility and convenience

The Kontrol Kube HardPanel containment system is an ultra durable solution for mobile containment. Built from high strength aluminum, the Kontrol Kube HardPanel is designed for daily repeated use. The HardPanel is a highly configurable design that can accommodate a HEPA filtered DOP compliant negative air machine on the inside or on the outside of the unit. This enables the user to expand or contract the footprint of the unit depending on the space that is available.



Standard Features

1 11' Ceiling Reach | Unit reaches 11' ceilings and accommodates 6' and 8' ladders without modification.

2 10 Windows | Six windows in the aluminum skin as well as four additional windows in the fabric upper enclosure ensure visibility when moving the unit. The windows also permit natural light in and visibility out for those working inside the unit.

3 Ratcheting Support Poles | Steel support poles with ratcheting and locking mechanisms allow for single handed raising and lowering of the unit.

4 Ceiling Foam Gasket | Ensures a tight seal between the unit and ceiling.

5 High Strength, Fire Rated Fabric | Synthetic fabric upper enclosure is over three times stronger than traditional vinyl enclosures. This advanced fabric meets NFPA 701 and California Fire Marshal fire rating.

6 12" Negative Air Port | Ensures compatibility with all popular negative air machines, including the Kontrol Kube Negative Air Machine.

7 8" Negative Air Exhaust Port | Enables a negative air machine to be used inside the unit so it can exhaust cleaned air.

8 Enclosure Pass Through | Permits large items such as conduit or pipes to be passed through the enclosure.

9 Cable Pass Through (2) | When pulling cable they can be fed from outside into the containment unit.

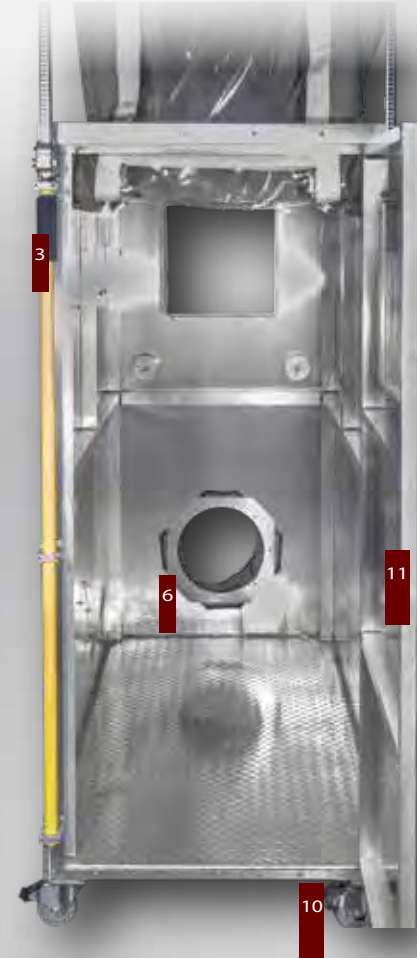
10 Locking Casters | 360° swivel, non-marking, locking casters allow the unit to be maneuvered into tight areas and locked for a secure working platform.

11 Locking Door | Tools and equipment can be left inside the unit securely between shifts, breaks and day to day.

Optional Components:

12 Negative Air Machine | HEPA Filtered Negative Air Machine ensures effective containment by negatively pressurizing the workspace. This prevents any dust from escaping. The DOP compliant filtered unit ensures single pass HEPA filtration.

13 AirBase for Negative Air Machine | Attaches to the Kontrol Kube HardPanel and holds the negative air machine. Once set up you have a completely mobile, rolling containment system. The AirBase is designed to accommodate most negative air machines.



Quick Facts

- Maximum Height - 11'
- Minimum Height - 5'11"
- Width - 30"
- Length - 68"
- Accommodates a 6' or 8' step ladder
- High strength aluminum components
- Fire Rated Fabric
- Ratcheting & Locking Support Poles

Kontrol Kube Advanced

The most versatile containment unit available

The Kontrol Kube Advanced containment unit incorporates all the elements of the original TopSider enclosure and adds new features making it easier to create temporary containment. Durability, flexibility and functionality have all been increased making this the most advanced containment enclosure available.

The Kontrol Kube Advanced unit can be used for ceiling and wall access, and can be set up as an anteroom to contain larger areas.* Manufactured with a NFPA 701 & California Fire Marshal rated synthetic fabric, the Advanced enclosure is over three times stronger than traditional vinyl enclosures.



Quick Facts

- Maximum Height - 8' or 10'
- Minimum Setup Height - 6'
- Width - 30"
- Length - 60"
- Accommodates a 6' or 8' step ladder
- Synthetic fire rated fabric
- Detachable flanges for anteroom and larger containment



*When using the 10' Advanced unit as an anteroom, ceiling height should be over 10 ft in order to fully extend the enclosure.



- 1 Synthetic Fabric Enclosure** | Over three times stronger than traditional vinyl enclosures. This advanced fabric meets NFPA 701 and California Fire Marshal fire rating.
- 2 Detachable Flanges** | Anteroom and Multi-Unit for larger containment. Anteroom flanges connect the unit to a doorway enabling room containment. Connector flanges allow multiple units to be connected together.
- 3 12" Negative Air Port** | Ensures compatibility with all popular negative air machines, including the Kontrol Kube Negative Air Machine.

- 4 8' and 10' Enclosures** | Meets your facilities specific needs. Both units are adjustable down to a working height of 7'.
- 5 Webbing Reinforcements** | In high stress points and wear areas ensure long life.
- 6 "Sag" Restraints** | Prevent the enclosure from sagging when lowered. The enclosure folds on itself like an accordion, maintaining a tight profile at any height.

- 7 Bolt Action Poles** | Make it simple to adjust the height of the unit and increase the overall strength and rigidity of the Uniframe.
- 8 Sky Dome Ceiling** | Clear interior ceiling flaps allows for easy placement of unit for overhead ceiling work.
- 9 Collapsible Design** | Allows the unit to be stored easily and take up less space. New features allow a unit that is collapsed to be set up in less than 2 minutes.

Kontrol Kube TopSider

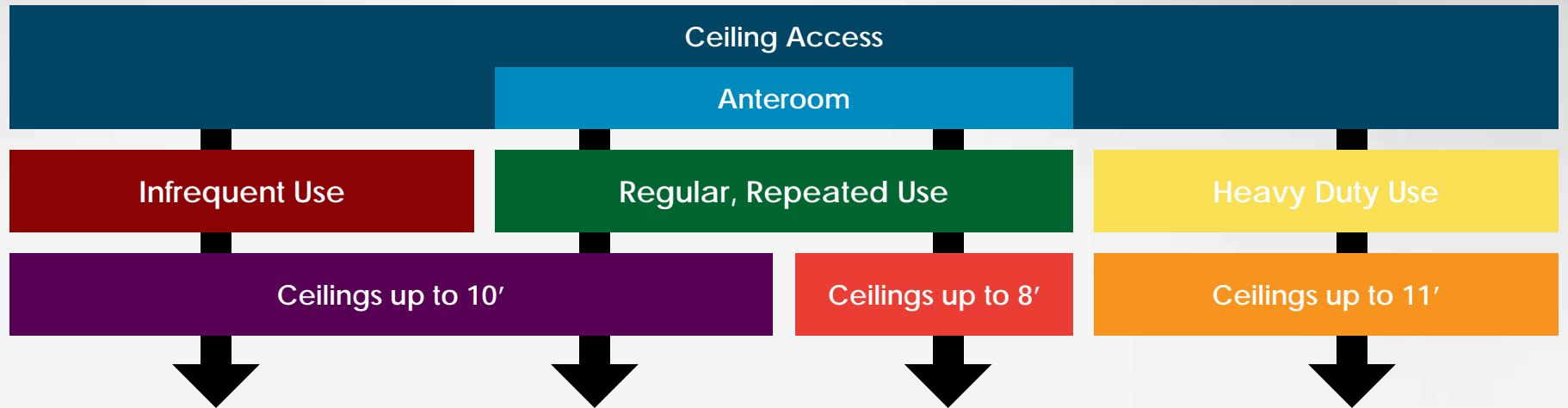
Designed to help get the job done, quickly and affordably

The Kontrol Kube TopSider is ideal for use when overhead containment is needed for maintenance or repairs such as cabling, light bulb replacement, HVAC access or any other above ceiling work. The TopSider can also be used for wall access when performing work such as plumbing or installing power and communications outlets. With a 30" wide wheel base, the unit can be quickly moved through all AIA and NFPA compliant doors to any area where dust and particulate control is needed.

- Increase worker productivity
- Reduce labor costs
- Eliminate expensive barrier materials
- Improve patient outcomes
- Simplify the ICRA process
- Accommodates a 6' and 8' step ladder
- Maximum height: 10'



Choose a Containment Unit



TopSider (10')

- Low cost vinyl enclosure
- Reaches 10' ceilings
- For overhead and wall use



Advanced (10')

- Next generation ultra durable fabric enclosure
- Reaches 10' ceilings
- For overhead, wall and anteroom use*



Advanced (8')

- Next generation ultra durable fabric enclosure
- Reaches 8' ceilings
- For overhead, wall and anteroom use



HardPanel (11')

- High strength aluminum components
- Reaches 11' ceilings
- For overhead use

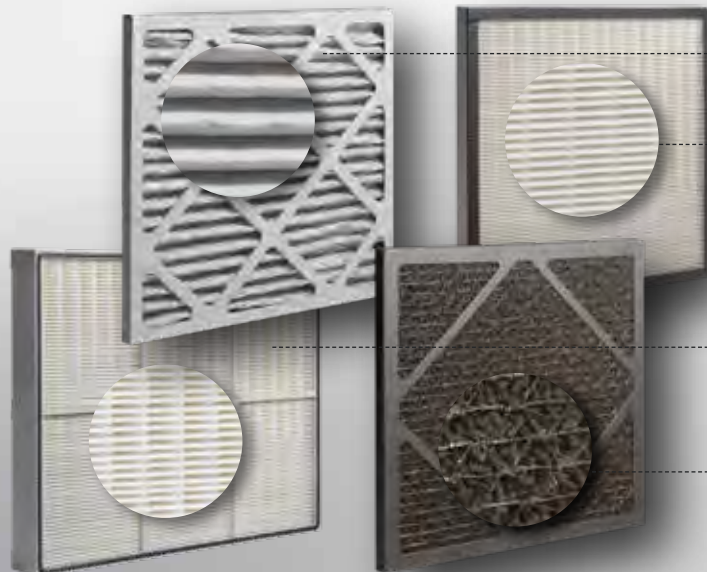
*When using the 10' Advanced unit as an anteroom, ceiling height should be over 10 ft in order to fully extend the enclosure.

Kontrol Kube Extras

Negative Air Machine

The Kontrol Kube Negative Air Machine offers the perfect combination of power, efficacy and convenience. Weighing in at 44 lbs, this negative air machine delivers a variable speed up to 500 CFM with the HEPA filter installed. The Kontrol Kube HEPA filtered Negative Air Machine, vital to all containment systems, ensures that all dust is captured and is designed to work seamlessly with the Kontrol Kube Mobile Containment Unit. *(Negative Air Machine comes equipped with the HEPA, DOP, and Pre-Filters)*

- 250 - 500 CFM (variable speed)
- 12" ductable intake
- Rotomolded plastic housing
- GFCI protected accessory outlet
- 25' power cord
- 3 stage DOP compliant HEPA filtered
- Filter change indicator light



Filters

First Stage Pre-Filter | High quality filter restores negative air machines to full efficiency. Replace regularly to ensure maximum performance.

Second Stage DOP Compliance Filter | The addition of the 2nd stage DOP Filter Kit ensures one pass HEPA filtration. This filter allows the Kontrol Kube Negative Air Machine to pass laboratory DOP testing conducted per ANSI standards, achieving an efficiency rating of 99.97% against oily aerosol particles down to 0.3 microns.

HEPA Filter | Kontrol Kube HEPA Filters combine filtration ability with filter capacity. To maximize filter life be sure to change the first stage pre-filter regularly.

Carbon Filter | The carbon filter captures a variety of volatile organic compounds (VOCs), including soot and smoke, food odors, fumes from paint and paint thinners, sewer odors and many other compounds.



AirBase

The Kontrol Kube AirBase attaches quickly and easily to the Kontrol Kube Wheelbase to enable complete mobility of all ladders, tools, equipment and a negative air machine. This innovative attachment makes moving the Kontrol Kube Mobile Containment system a quick and easy task that can be performed by one person.

- Designed to support the Kontrol Kube Negative Air Machine
- Connects to the Kontrol Kube WheelBase
- Two locking casters
- Adjustable for compatibility with other negative air machines



MOLD PRODUCT REFERENCE GUIDE

Product Name	Description	Size	Code	Product Characteristics				Spray Settings		VOC Information					
				Color	Finish	Tintable	Coverage (ft ² /gal)	PSI	Tip Size	VOC (g/l)	US EPA	OTC	CARB	LADCO/MRPO	SCAQMD

EPA Registered Fungicidal Coating

AfterShock	Fungicidal Coating	1 Gallon	8390-1	White	Semi-Gloss	-	250-400	2000-3000	.017-.021	173	✓	✓	✓*	✓	✓*
		5 Gallon	8390-5												

Mold Resistant Coatings

IAQ 6000	Mold Resistant Coating [†]	5 Gallon	8360-5	White	Matte	✓	250-400	2000-3000	.015-.019	65	✓	✓	✓	✓	✓
IAQ 6000 GEN3	Mold Resistant Coating [†]	5 Gallon	8366-5	White	Matte	✓	250-400	2000-3000	.019-.021	0	✓	✓	✓	✓	✓
IAQ 6100	Mold Resistant Coating [†]	5 Gallon	8361-5	Clear	Semi-Gloss	-	350-600	2000-2800	.015-.019	90	✓	✓	✓	✓	✓
IAQ 6500	Mold Resistant Coating [†]	5 Gallon	8365-5	Black	Eggshell	-	250-400	1500-3000	.015-.023	77	✓	✓	✓	✓	✓
IAQ 6000HD	Mold Resistant Coating [†]	5 Gallon	8362-5	White	Matte	✓	250-400	2200-2800	.019-.025	91	✓	✓	✓	✓	✓
IAQ 6040	Mold Resistant Coating [†]	5 Gallon	8363-5	Violet	N/A	-	400-450	1300-2000	.015-.021	89	✓	✓	✓	✓	✓

Waterproofers, Primers & Sealers

IAQ 3000	Masonry Block Filler	5 Gallon	8330-5	White	Matte	✓	100-200	2500-3000	.015-.019	81	✓	✓	✓	✓	✓
IAQ 4000	Acrylic Latex DTM Primer	5 Gallon	8340-5	White	Matte	✓	400-450	1500-2500	.017-.021	98	✓	✓	✓	✓	✓
IAQ 5000	Stain Blocking Primer	5 Gallon	8350-5	White	Matte	✓	400-500	2200-2800	.015-.017	93	✓	✓	✓	✓	✓
IAQ 9000	Mold Resistant Masonry Waterproofer [†]	5 Gallon	8395-5	White	Matte	✓	100-125	Not Recommended		95	✓	✓	✓	✓	✓

HVAC Sealants & Coatings

IAQ 7000	HVAC Sealant	5 Gallon	8370-5	White	Gloss	✓	100-200	2200-3000	.017-.023	52	✓	✓	✓	✓	✓
IAQ 7500	HVAC Sealant	5 Gallon	8375-5	Clear	Gloss	-	100-200	2200-3000	.017-.023	54	✓	✓	✓	✓	✓
IAQ 8000	HVAC Sealant	5 Gallon	8380-5	White	Semi-Gloss	✓	200-600	2500-3000	.019-.023	90	✓	✓	✓	✓	✓
IAQ 8500	HVAC Sealant	5 Gallon	8385-5	Black	Semi-Gloss	-	200-600	2500-3000	.019-.023	89	✓	✓	✓	✓	✓

*Aftershock is not EPA registered for sale in California. [†]Resists mold growth on the dry coating surface only

MOLD PRODUCT REFERENCE GUIDE

Size	Code	Product Characteristics			EPA Registration							Applications						
		Color	Active Ingredient	Dilution Ratio or Ready-To-Use	EPA Toxicity Category	EPA Registered	Disinfect Non-Porous Material	Sanitize Porous Material	EPA Registered - Black Water	Effective in 98% Soil Load	Organism Kill Claims	Water Damage	Mold Remediation	Stain Removal	Extreme Duty Stain Removal	Heavy Duty Cleaning	Extreme Duty Cleaning	Laundry Additive

Disinfectants and Sanitizers

ShockWave	Disinfectant, Sanitizer, Fungicide, Cleaner, Concentrate	1 Gallon	8310-1	Blue	Quaternary Ammonium Chloride	2-4 oz./gallon	II	✓	✓	✓	✓	✓	130+	✓	✓	-	-	-	-	-	✓	
		10 oz. Bottle	8311-10																			
ShockWaveRTU	Disinfectant, Sanitizer, Fungicide, Cleaner, Pre-mixed	1 Gallon	8316-1	Clear	Quaternary Ammonium Chloride	Ready-To-Use	III	✓	✓	✓	✓	-	120	✓	✓	-	-	-	-	-	-	-
		5 Gallon	8316-5																			
ShockWave Hydrogen Peroxide	Disinfectant, Sanitizer, Fungicide, Cleaner, Pre-mixed	1 Gallon	8318-1	Clear	Hydrogen Peroxide	Ready-To-Use	IV	✓	✓	-	-	-	27	✓	✓	-	-	-	-	-	-	-
IAQ 2000	Disinfectant & Cleaner, Concentrate	1 Gallon	8320-1	Blue	Quaternary Ammonium Chloride	2 oz./gallon	II	✓	✓	-	✓	-	41	✓	✓	-	-	-	-	-	-	-
IAQ 2500	Disinfectant & Cleaner, Pre-mixed	5 Gallon	8325-5	Purple	Quaternary Ammonium Chloride	Ready-To-Use	III	✓	✓	-	✓	-	36	✓	✓	-	-	-	-	-	-	-

Cleaners and Stain Removers

Advanced Peroxide Cleaner	High Foaming Mold & Mildew Stain Remover	2.5 Gallon	8314-2.5	Clear	Hydrogen Peroxide	Ready-To-Use	-	-	-	-	-	-	-	✓ [‡]	✓ [‡]	✓	✓	-	-	-	-
HydroBoost	Additive for Advanced Peroxide Cleaner	1 Quart	8313-Q	Red	Sodium Metasilicate	16 oz./gallon	-	-	-	-	-	-	-	✓ [‡]	✓ [‡]	✓	✓	✓	✓	✓	-
HydroBrite	Powder Additive for Advanced Peroxide Cleaner	1.65 lbs.	8312-1.65	White	Sodium Carbonate	1-6 scoops	-	-	-	-	-	-	-	✓ [‡]	✓ [‡]	✓	✓	✓	✓	✓	-
IAQ 1000	Mold & Mildew Stain Remover	5 Gallon	8315-5	Clear	Hydrogen Peroxide	Ready-To-Use	-	-	-	-	-	-	-	✓ [‡]	✓ [‡]	✓	-	-	-	-	-
Instant Mold Stain Remover	Aggressive Mold & Mildew Stain Remover	1 Gallon	8317-1	Straw	Sodium Hypochlorite	Ready-To-Use	-	-	-	-	-	-	-	✓ [‡]	✓ [‡]	✓	✓	✓	✓	✓	-

Mold Products
Proven results from the most trusted brand

[‡]For the cleaning and removal of mold stains, dirt and inanimate particulate. No claim is made by these products to prevent, destroy, repel or mitigate any living organism.

LEAD ABATEMENT PRODUCT REFERENCE GUIDE

Size	Code	Product Characteristics				Spray Settings		VOC Information					
		Color	Finish	Tintable	Coverage (ft ² /gal)	PSI	Tip Size	VOC (g/l)	US EPA	OTC	CARB	LADCO/MRPO	SCAQMD

Lead Encapsulants

LBC	Professional Lead Encapsulant (Type III) - Interior/Exterior	5 Gallon	5800-5	Antique Linen	Matte	-	120*	2500-3000	.019-.021	88	✓	✓	✓	✓	✓
			5801-5	White		✓									
			5801-5-SPCL	Black		-									
		1 Gallon	5801-1	White		✓									
ChildGuard	Interior/Exterior Lead Encapsulant Coating	1 Gallon	5600-1	White	Matte	✓	120*	2500-3000	.019-.021	88	✓	✓	✓	✓	✓
Barrier Coat II	Lead Encapsulant Coating	5 Gallon	2801-5	White	Matte	✓	120*	2500-2800	.021-.023	55	✓	✓	✓	✓	✓

Post Removal Lockdowns

Lead Shield	Post Removal Lockdown/Sealant	5 Gallon	5470-5	Clear	Semi-Gloss	-	450	2000-3000	.015-.021	96	✓	✓	✓	✓	✓
			5475-5	Blue		-				96					
			5477-5	White		✓				96					



*At 7 mil dry film thickness

LEAD ABATEMENT PRODUCT REFERENCE GUIDE

Size	Code	Product Characteristics								VOC (g/l)
		Color	Coverage (ft ² /gal)	Odor	pH	Dilution Ratio	Cleaning Action			

Lead Cleaners & Wipes

Product Name	Description	Size	Code	Color	Coverage (ft ² /gal)	Odor	pH	Dilution Ratio	Cleaning Action	VOC (g/l)
LeadSafe Cleaner	Concentrated Lead Cleaner	1 Quart	5496-12	Light Green	500-1500	Slight	5-6.2	6-7 oz./gallon	Chelation	0
		1 Gallon	5496-1							
LeadSafe Wipes	Heavy-Duty, Pre-Soaked TSP Wipes	90 Towels per Canister	5498-90C	White Towelette	-	Slight	11.5-12	-	TSP	0

Size	Code	Product Characteristics								Spray Settings		VOC (g/l)
		Color	Coverage (ft ² /gal)	Odor	pH	Fast Acting	Neutralization Required	PSI	Tip Size			

Paint Strippers & Removers

Product Name	Description	Size	Code	Color	Coverage (ft ² /gal)	Odor	pH	Fast Acting	Neutralization Required	PSI	Tip Size	VOC (g/l)
Piranha 2	Heavy-Duty Paint Remover Gel	5 Gallon	5720-5	Clear/Hazy	50-100	Strong	7-9	✓	-	2600	.017-.021	321
Piranha 4	Solvent Gel	5 Gallon	5740-5	Blue	250-400	Moderate	7-8	✓	-	2600	.019-.021	520
Piranha 8	Alkaline Paste	5 Gallon	5780-5	Off-White	6-25	Slight	>13	-	✓	Contact Fiberlock		0
Piranha NexStrip	Water Based Paste	5 Gallon	5700-5	Off-White	40-60	None	6	-	-	3200	.023-.027	0
Piranha NexStrip Pro	Water Based Paste	5 Gallon	5701-5	Off-White	40-60	Mild	2.7	-	-	3000	.023-.027	40
Piranha NexStrip 8	Alkaline Paste	5 Gallon	5702-5	Off-White	6-25	Slight	13	-	✓	Contact Fiberlock		0

Lead Abatement Products
Proven results from the most trusted brand

ASBESTOS ABATEMENT PRODUCT REFERENCE GUIDE

Product Name	Description	Size	Code	Product Characteristics				Spray Settings		VOC Information					
				Color	Finish	Tintable	Coverage (ft ² /gal)	PSI	Tip Size	VOC(g/l)	US EPA	OTC	CARB	LADCO/MRPO	SCAQMD

Bridging and Penetrating Encapsulants

ABC	Bridging/Penetrating Asbestos Encapsulant/Sealant	5 Gallon	6421-5	Off-White	Gloss	✓	50-100	2200-3000	.017-.023	64	✓	✓	✓	✓	✓
			6422-5	Clear		-				56					
			6423-5	Green		-				56					
ABC Fiberspray	Asbestos Encapsulant/Sealant	8 oz. Cans	6410-8	Off-White	Gloss	-	35-40 ft ² /can	N/A	N/A	64	✓	✓	✓	✓	✓
Lag-Kote	Interior/Exterior Bridging Encapsulant	5 Gallon	6424-5	White	Matte	✓	75-175	2200-2700	.015-.019	165	✓	✓	✓	✓	✓
Lag-Kote II	Asbestos Bridging Encapsulant	2 Gallon	6420-2	White	Semi-Gloss	✓	75-175	2200-2700	.017-.021	89	✓	✓	✓	✓	✓
		5 Gallon	6420-5							89					
TBC	Interior/Exterior Encapsulant Coating for Transite	5 Gallon	6497-5	White	Matte	✓	50-100	2500-3000	.019-.021	88	✓	✓	✓	✓	✓
SerpiFlex	Asbestos Encapsulant	5 Gallon	2451-5	White	Matte	✓	50-100	2200-3000	.017-.022	76	✓	✓	✓	✓	✓
SerpiMastic	Interior/Exterior High-Temp Asbestos Encapsulant	5 Gallon - Trowelable	2418-5	Off-White	Flat	✓	18-30	1000	.027-.029	20	✓	✓	✓	✓	✓
		5 Gallon - Sprayable	2419-5							20					

Lockdowns

Fiberset PM	Post-Removal Surface Sealant/Lockdown/Removal Encapsulant	5 Gallon	7470-5	White	Semi-Gloss	-	350-500	1700-3000	.015-.021	52	✓	✓	✓	✓	✓
			7475-5	Clear						18					
			7480-5	Blue						71					

ASBESTOS ABATEMENT PRODUCT REFERENCE GUIDE

Size	Code	Product Characteristics							Spray Settings		VOC (g/l)
		Color	Coverage (ft ² /gal)	Odor	Surface Tension	Dilution Ratio	PSI	Tip Size			

Wetting Agents

Penewet	Wetting Agent & Surfactant	5 Gallon	6450-5	Clear	500	Slight	32 dynes	Ready-To-Use	400-500	.017-.023	0
---------	----------------------------	----------	--------	-------	-----	--------	----------	--------------	---------	-----------	---

Size	Code	Product Characteristics								
		Color	Coverage (ft ² /gal)	Odor	Rewettable	Fast Set	600° F Temp. Resistance	Topcoat-able		

Thermal Insulation Repair

Lag-Kloth	Water-Activated Repair Cloth	5'x15' Blanket	6425-U	Off-White	75 ft ²	Slight	✓	-	✓	✓
		5'x150' Roll	6426-U		750 ft ²					
		4" x 150' Tape (3 rolls)	6427-U		150 ft ²					
Wet-Wrap 'N' Seal	Asbestos Encasement Repair Cloth	4" x 9' (60 Rolls)	2432-U	White	3 ft ²	Slight	-	✓	-	✓
		6" x 9' (40 Rolls)	2433-U		4.5 ft ²					
		8" x 9' (30 Rolls)	2434-U		6 ft ²					

Asbestos Abatement Products
Proven results from the most trusted brand

INDUSTRIAL COATINGS PRODUCT REFERENCE GUIDE

Size	Code	Product Characteristics				Spray Settings		VOC Information					
		Color	Finish	Tintable	Coverage (ft ² /gal)	PSI	Tip Size	VOC (g/l)	US EPA	OTC	CARB	LADCO/MRPO	SCAQMD

Specialty Industrial Coatings

Grip-Tack	Lockdown & Demolition Adhesive for Lead & Asbestos	5 Gallon	6408-5	Clear	Gloss	—	200	1900-2500	.015-.019	0	✓	✓	✓	✓	✓
Powerstone Plus	Waterborne Acrylic Surface Conditioner	5 Gallon	5489-5	Clear	Gloss	—	250-300	1400-1600	.015-.019	90	✓	✓	✓	✓	✓
Power Rust Stop	100% Acrylic Rust-Inhibiting Primer	5 Gallon	5493-5	White	Eggshell	✓	400-500	2300-2800	.017-.021	98	✓	✓	✓	✓	✓
PowerBlock	Quick-Drying Latex Primer	5 Gallon	5450-5	White	Matte	✓	400-500	2300-2700	.017-.021	98	✓	✓	✓	✓	✓



Industrial Coatings
Proven results from the most trusted brand

DISASTER RESTORATION PRODUCT REFERENCE GUIDE

Size	Code	Product Characteristics				Spray Settings		VOC Information					
		Color	Finish	Tintable	Coverage (ft ² /gal)	PSI	Tip Size	VOC (g/l)	US EPA	OTC	CARB	LADCO/MRPO	SCAQMD

Restoration Coatings

RECON Smoke Odor Sealer	Smoke Odor Sealant with OdorLock Technology	1 Gallon	3090-1	White	Gloss	✓	200	2200-3000	.017-.023	68	✓	✓	✓	✓	✓
		5 Gallon	3090-5												
		1 Gallon	3091-1	White		✓				49					
		5 Gallon	3091-5												
ULTRA RECON Smoke Odor Sealer	Smoke Odor Sealant with OdorLock Plus Technology	1 Gallon	3092-1	White	Flat	✓	200	2000-3000	.015-.021	49	✓	✓	✓	✓	✓
		5 Gallon	3092-5												
		1 Gallon	3093-1	Woodtone		-				49					
		5 Gallon	3093-5												
1 Gallon	3094-1	Woodtone	-	49											
5 Gallon	3094-5				Woodtone	-	49								

Size	Code	Product Characteristics					VOC (g/l)
		Color	Odor	pH	Dilution Ratio or Ready-To-Use	Wet Fog	

Odor Counteractants

RECON Extreme Duty Odor Counteractant	Multi-Purpose Odor Counteractant	1 Gallon	3041-1	Clear	Fresh Scent	7-7.5	Ready-To-Use or 1-8 oz./gallon	✓	25
---------------------------------------	----------------------------------	----------	--------	-------	-------------	-------	--------------------------------	---	----

Cleaners

RECON Citrus Solvent Cleaner	Citrus Degreaser/Deodorizer	1 Gallon	3022-1	Orange	Orange	11.5-12.5	RTU or 2-4 oz./gallon	-	788
RECON Extreme Duty Cleaner	High pH Butyl Cleaner	1 Gallon	3024-1	Purple	Butyl	13.0-14.0	2-16 oz./gallon	✓	202
RECON Heavy Duty Cleaner	Cleaner/Degreaser	1 Gallon	3027-1	Orange	Slight	12.0-13.0	2-4 oz./gallon	✓	49

Manufacturing Facility

Fiberlock's state of the art headquarters and manufacturing facility was built in 2000 and was designed to be the most advanced manufacturing facility in the industry. Features such as automated raw material and mixing systems, zero wastewater discharge practices, and limited plant emissions have enabled Fiberlock to produce consistent, high quality products in an environmentally conscious facility.

The full time R&D staff and product development center is the core of innovation where new products are developed. Leveraging strong relationships with raw material suppliers and years of experience Fiberlock is on the forefront of new coatings, cleaners, and disinfectant technology.

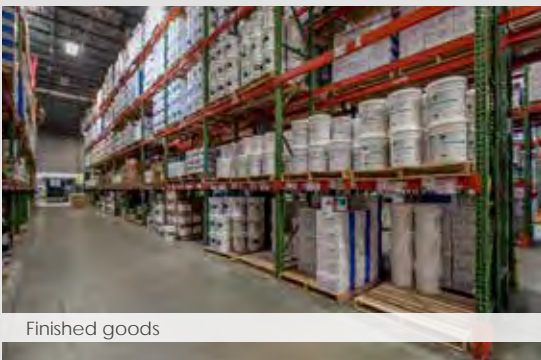
Before any products are introduced they must go through a battery of rigorous performance and quality assurance testing to ensure they meet the high standards Fiberlock is known for.



Computer controlled mixing tanks



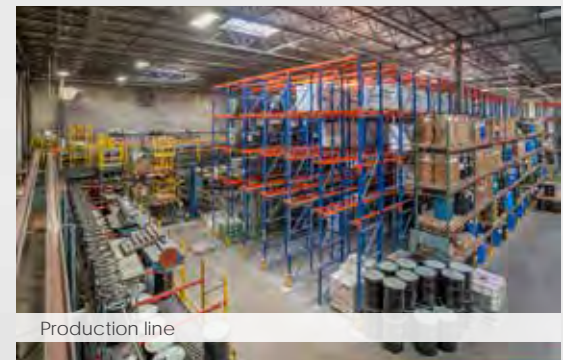
Bulk raw material storage



Finished goods



Raw material storage



Production line

Product Availability

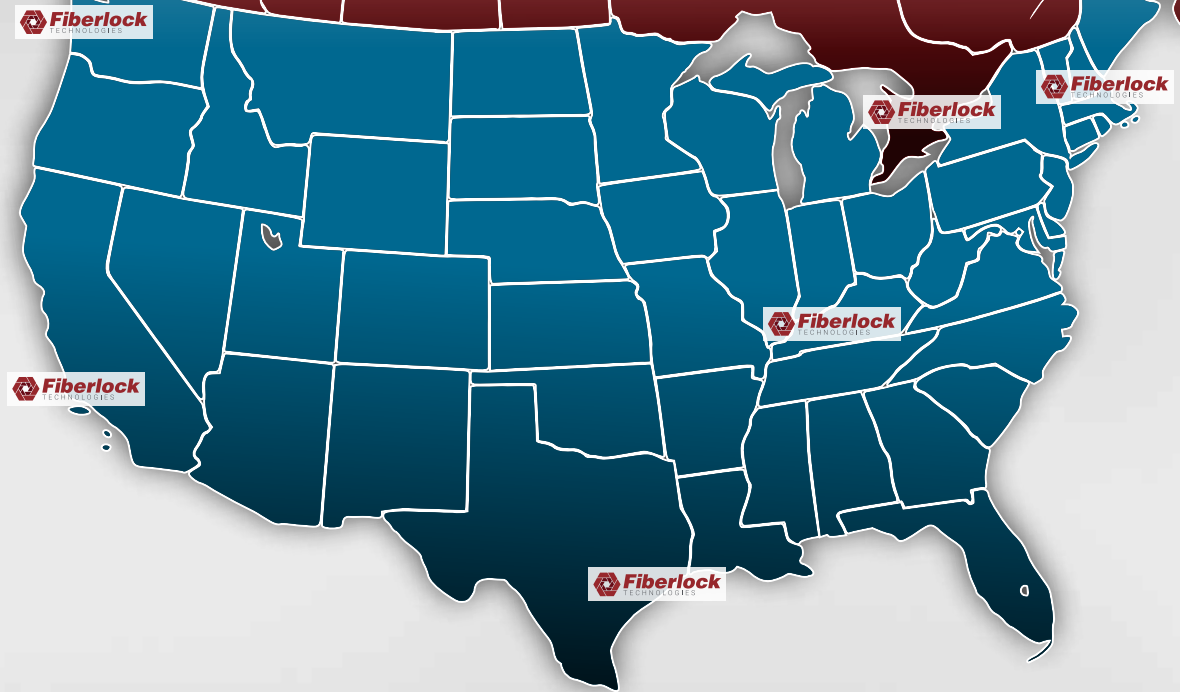
Fiberlock is ready to serve our customers

Fiberlock warehousing and logistics systems ensure that product is always available.

- With multiple warehouses to serve our customers, Fiberlock can deliver product to most of the US within 2 days.
- International distribution centers avoid the costs and delays associated with clearing customs and long transit times.

During catastrophic events Fiberlock's emergency response program ensures that product is in stock and ready for delivery when needed.

- Temporary warehouses, located in the most affected areas, provide same day delivery of product.
- Manufacturing capabilities ensure a constant, uninterrupted supply of product to meet any demand.



Corporate Headquarters

150 Dascomb Rd.
 Andover, MA
 t: 800.342.3755
 f: 978.482.2048

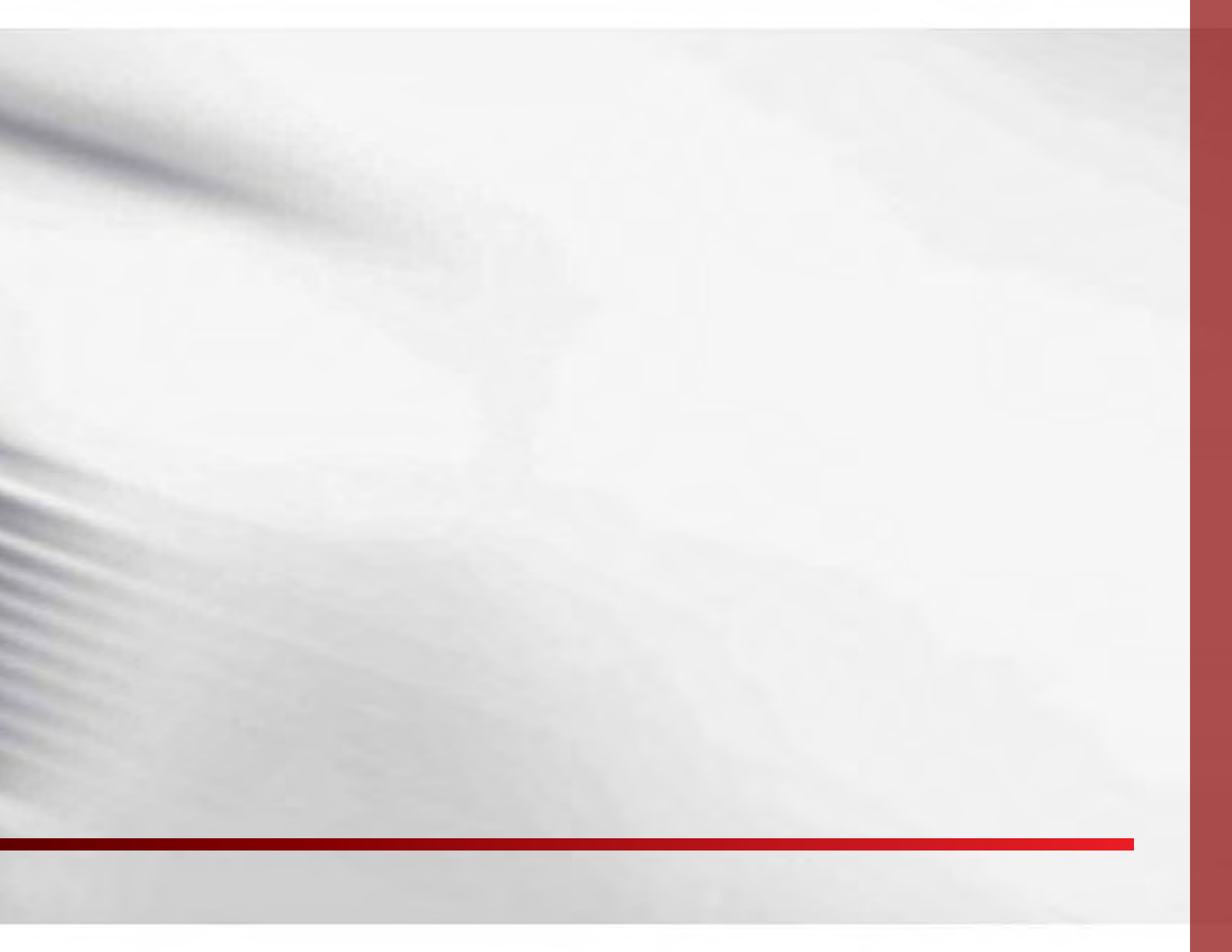
US Distribution Centers

Northeast | Andover, MA
Midwest | Louisville, KY
South Central | Houston, TX
Northwest | Seattle, WA
Southwest | Los Angeles, CA

International Distribution Centers

Canada | Toronto, ON
Australia | Brisbane, QLD & Melbourne, VIC
United Kingdom | London, England

Notes



Notes

Notes

Learn more at www.fiberlock.com or call 800.342.3755

PROFESSIONAL PRODUCTS, PROFESSIONAL RESULTS



Learn more at www.fiberlock.com or call 800.342.3755

ABC, Aftershock, Barrier Coat, ChildGuard, IAQ, Recon, Kontrol Kube, Lag-Kloth, Lag-Kote, LBC, Lead Shield, NexStrip, Piranha, SerpiFlex, ShockWave and the slogans, product labeling, logos and other marks in this brochure are the trademarks of Fiberlock Technologies.
© Fiberlock Technologies. All rights reserved. 1500417 Version 6

Fiberlock Technologies is a division of ICP Construction, Inc.

